

Figure 5: Percentage Persons in Poverty by Census Tract, 1990

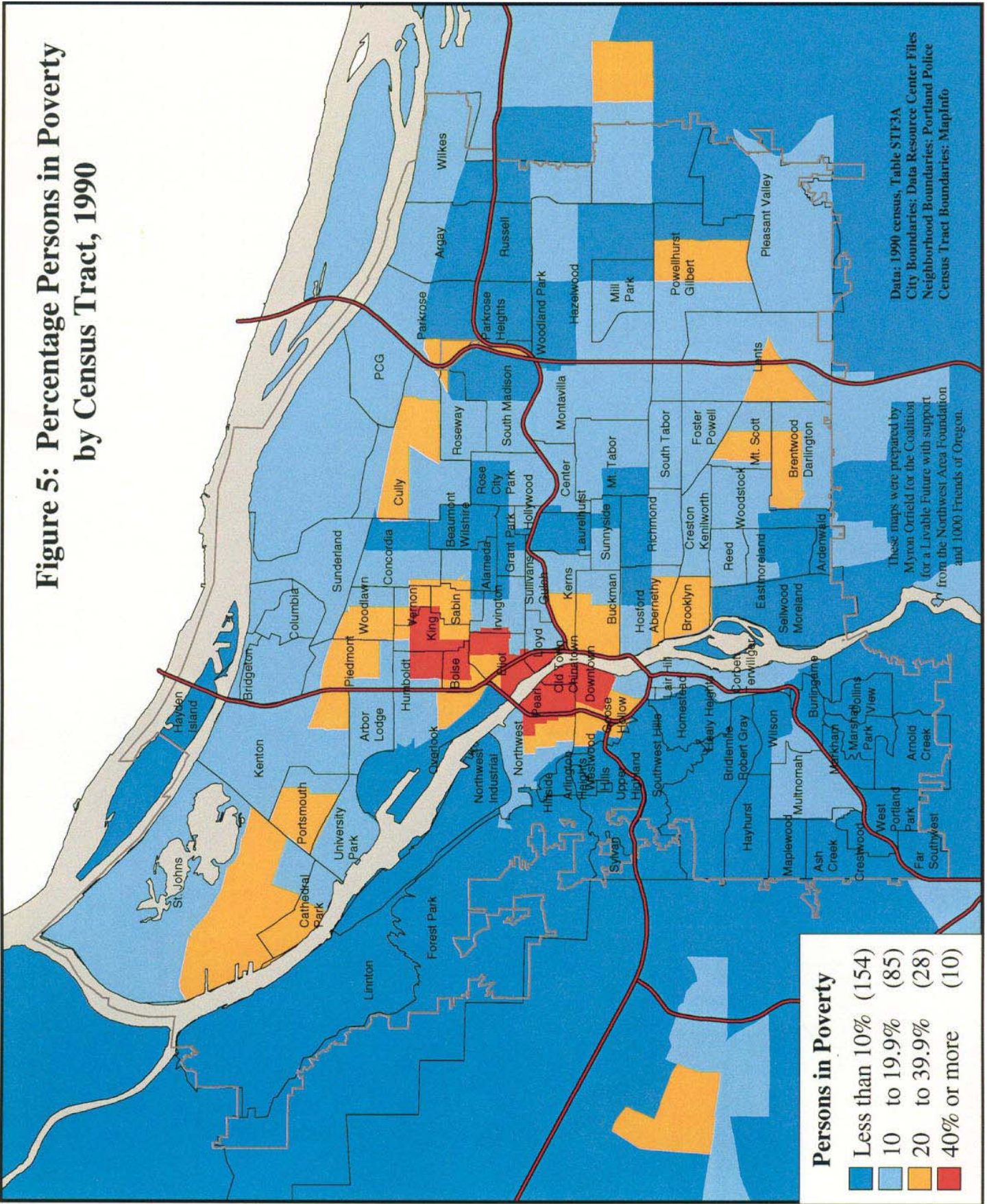


Figure 6: Percentage of Children Under 5 Years in Poverty, 1990

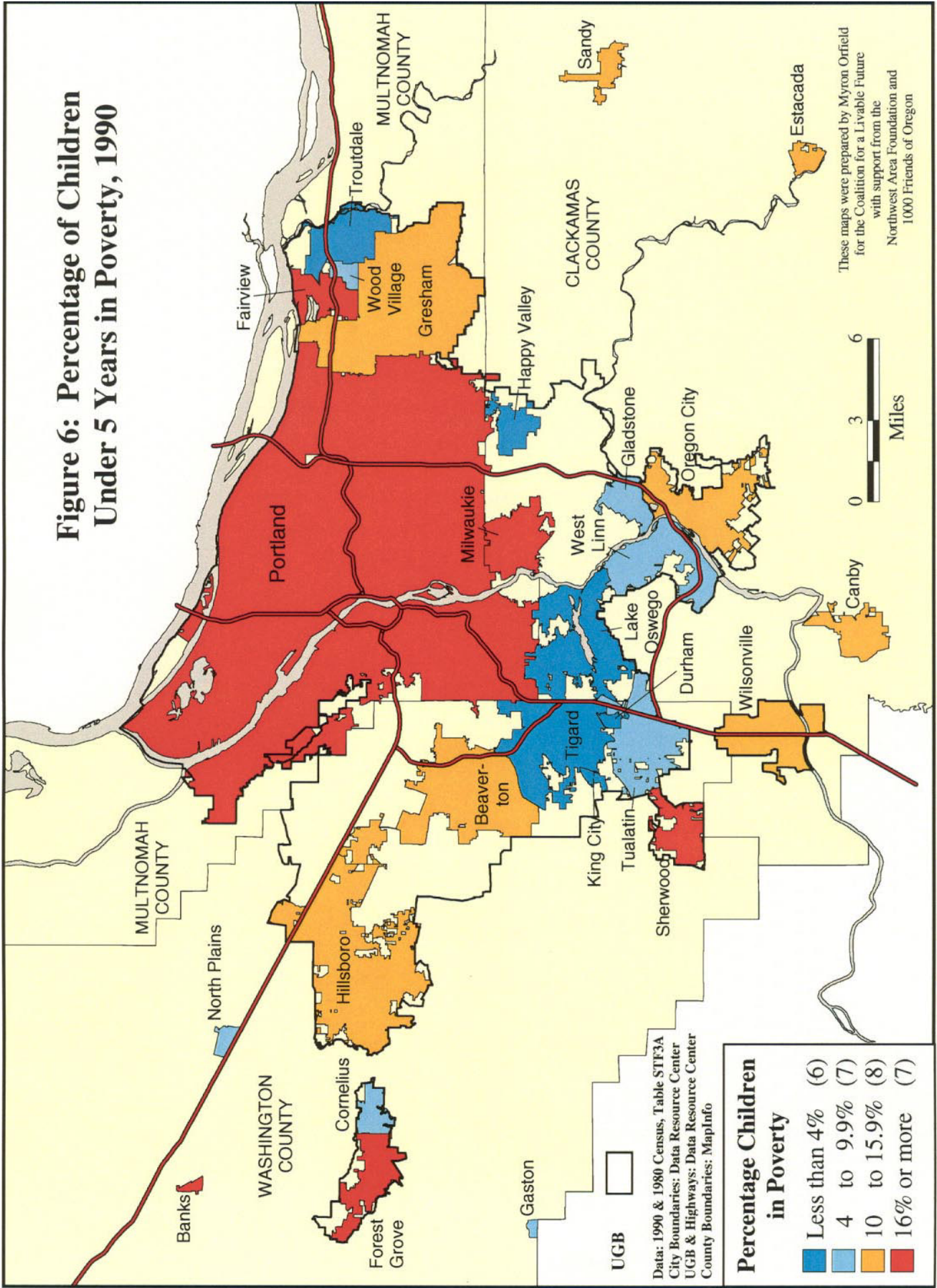


Figure 7: Percentage Change in Percentage of Children Under 5 Years in Poverty, 1980-1990

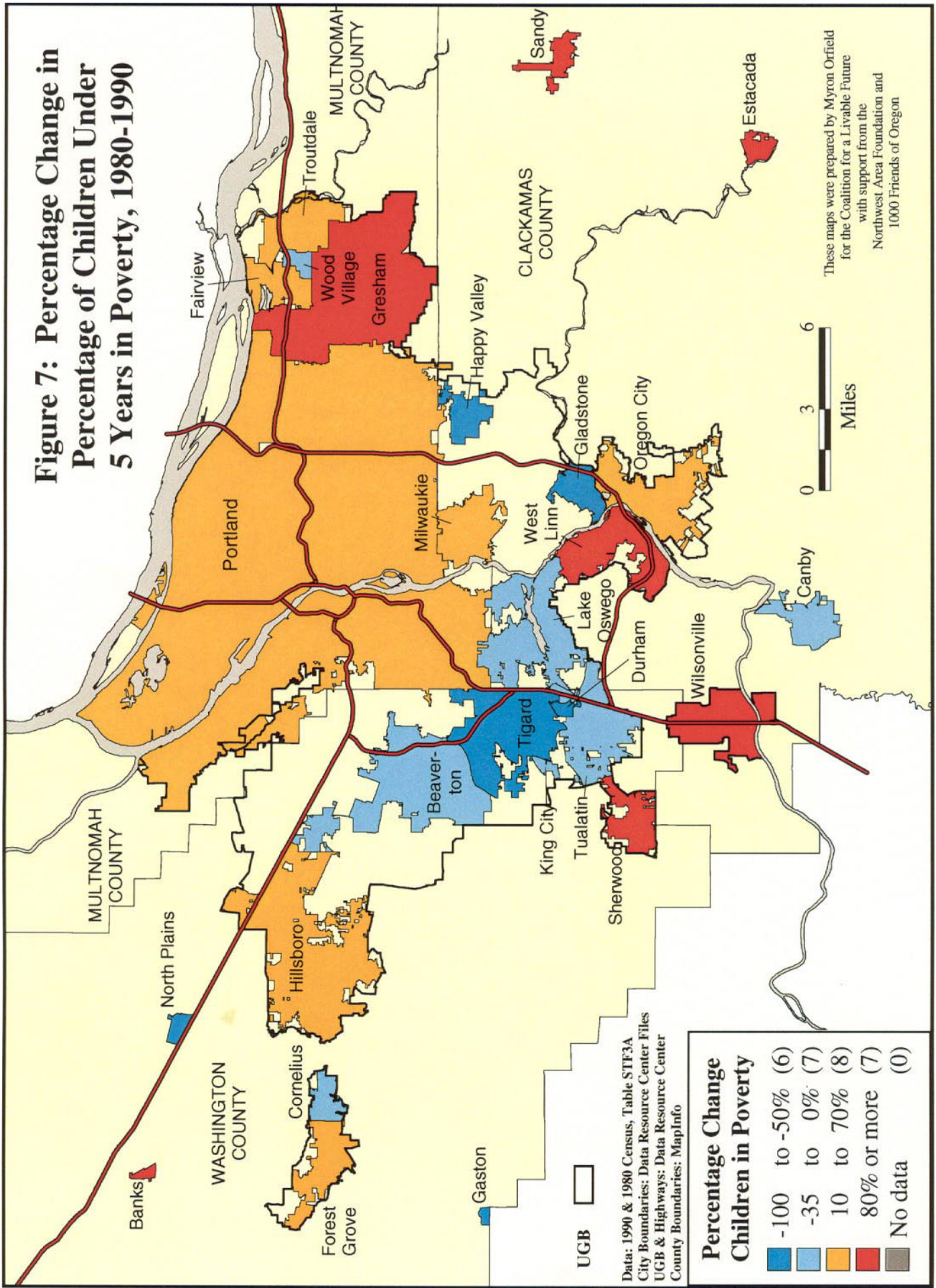
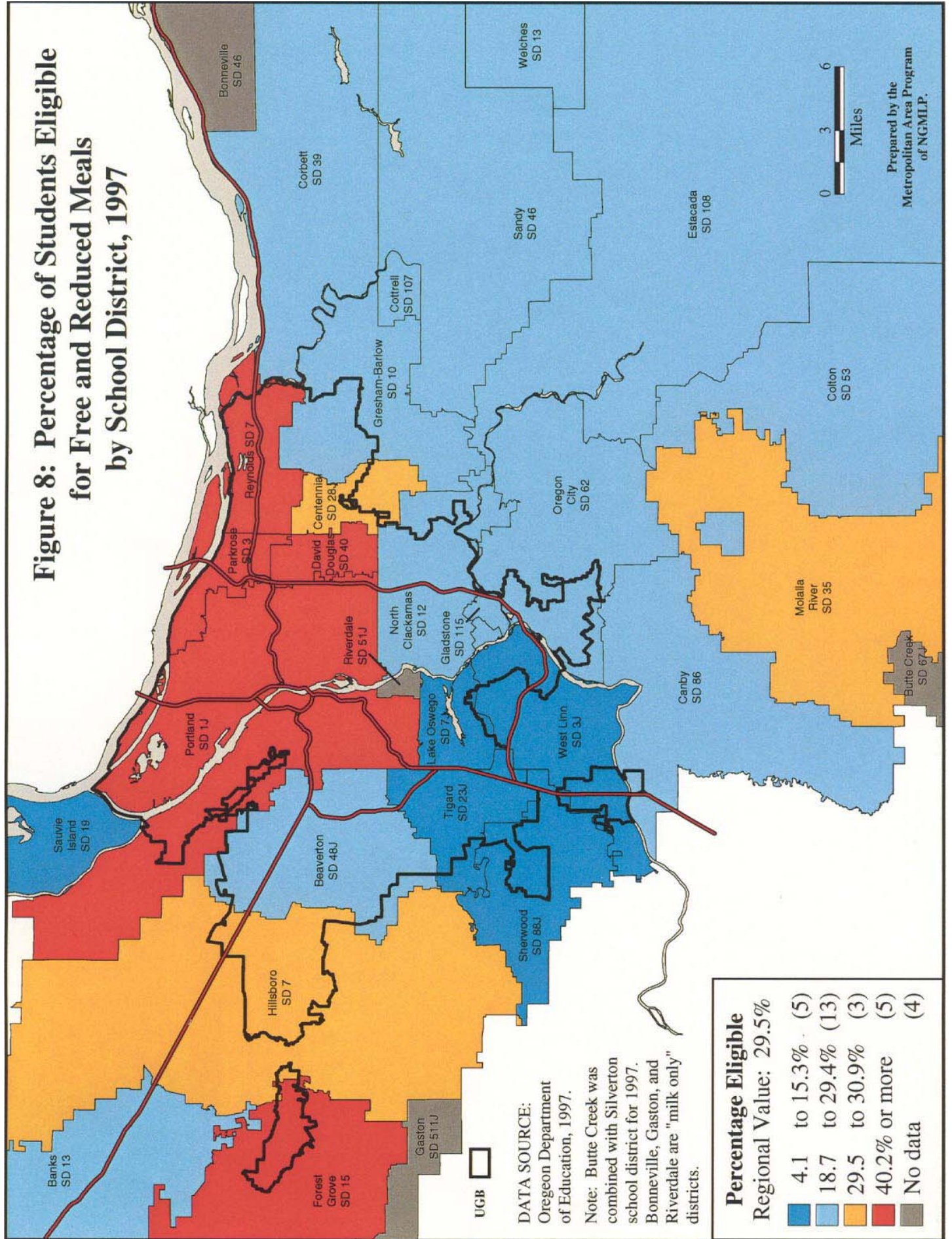


Figure 8: Percentage of Students Eligible for Free and Reduced Meals by School District, 1997



**Figure 9: Change in Percentage Points
Students Eligible for Free and Reduced Meals
by School District, 1997**

