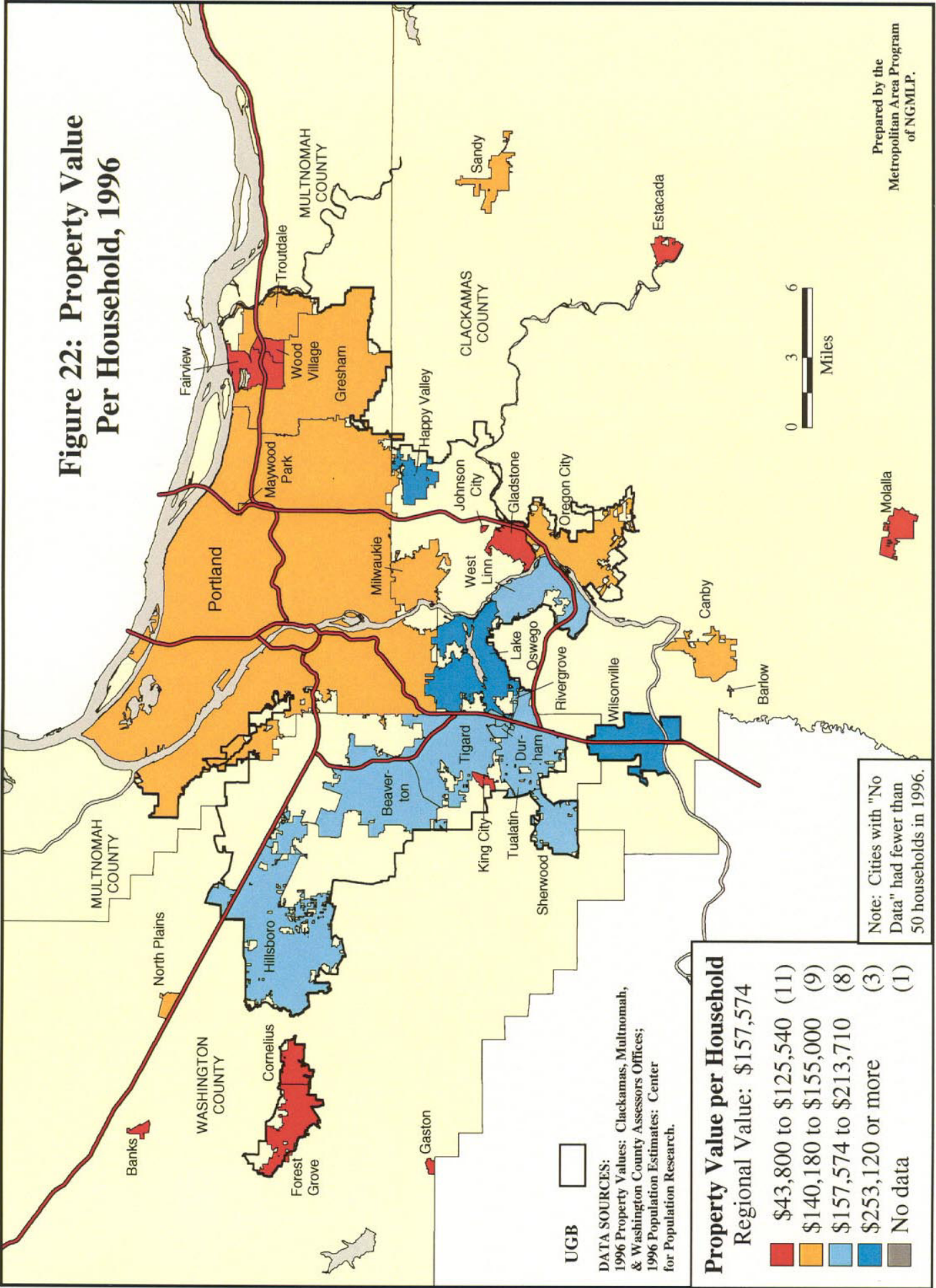


Figure 22: Property Value Per Household, 1996



Prepared by the
Metropolitan Area Program
of NGMLP.

Figure 23: Percentage Change in Property Value Per Household, 1990-1996 (Adjusted for CPI)

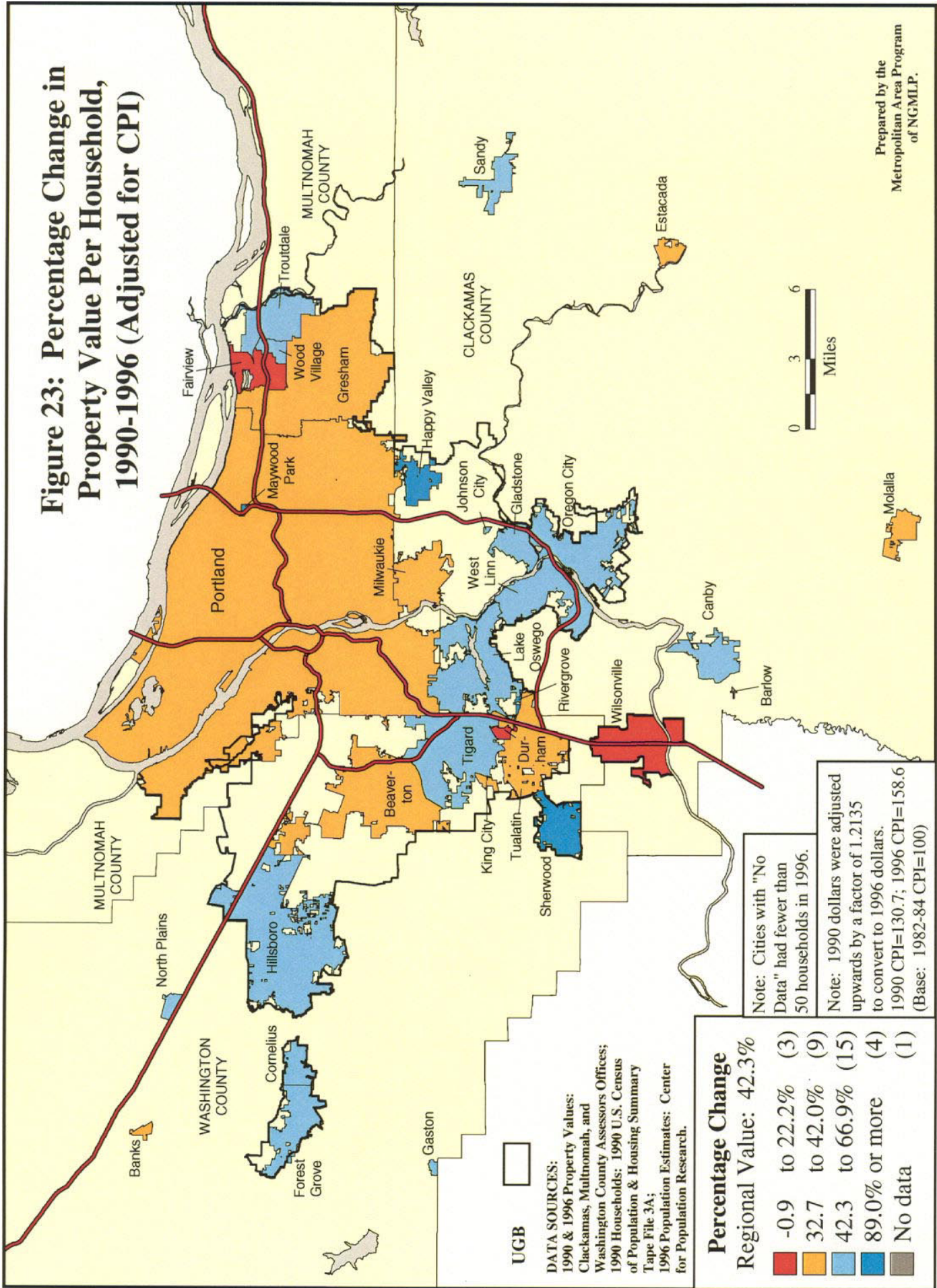
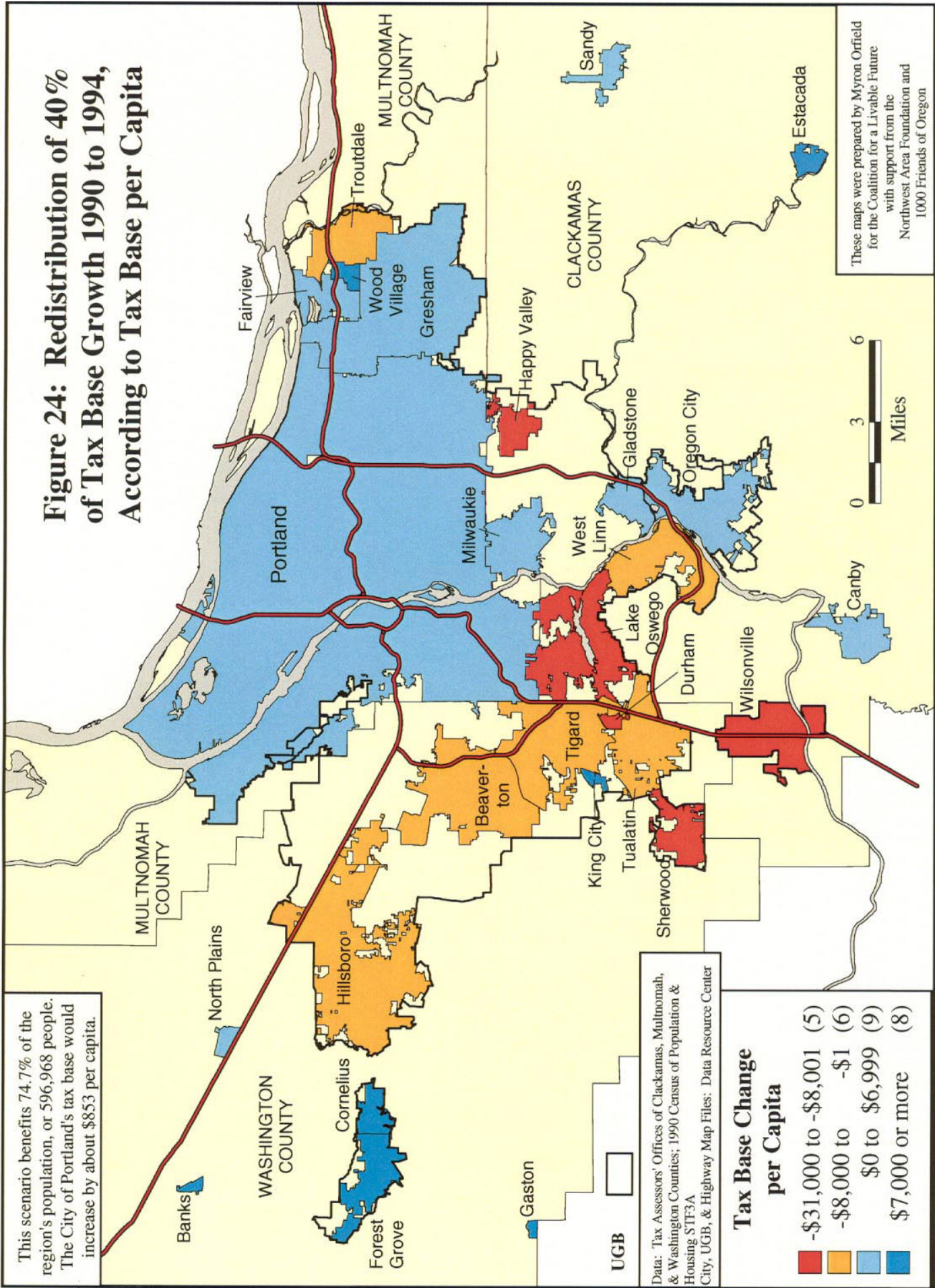


Figure 24: Redistribution of 40% of Tax Base Growth 1990 to 1994, According to Tax Base per Capita



This scenario benefits 74.7% of the region's population, or 596,968 people. The City of Portland's tax base would increase by about \$853 per capita.

Data: Tax Assessors' Offices of Clackamas, Multnomah, & Washington Counties; 1990 Census of Population & Housing STF3A
City, UGB, & Highway Map Files: Data Resource Center

Tax Base Change per Capita	
Red	-\$31,000 to -\$8,001 (5)
Orange	-\$8,000 to -\$1,000 (6)
Light Blue	\$0 to \$6,999 (9)
Dark Blue	\$7,000 or more (8)

These maps were prepared by Myron Orfield for the Coalition for a Livable Future with support from the Northwest Area Foundation and 1000 Friends of Oregon

