



Regional Equity Atlas

The Portland Metro Region's Geography of Opportunity

equityatlas.org

clfuture.org



PHOTO:
HOME FORWARD

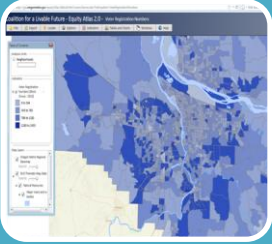
What is the Regional Equity Atlas?

A tool to understand how well different neighborhoods and populations across the region are able to access essential resources & opportunities



Housing • Education • Transportation • Health • Food • Clean Air • Nature • Services

Regional Equity Atlas 2.0 Components



Web-based mapping tool



Interpretive website



Outreach & education

Equity Atlas 2.0 Partners



**COALITION FOR A
LIVABLE FUTURE**



Metro | *Making a great place*



Portland State University
Institute of Portland
Metropolitan Studies

In an Equitable Region . . .

All people have access to the resources necessary for meeting their basic needs and advancing their health and well-being.

All people have the power to shape the future of their communities through public decision-making processes that are transparent, inclusive, and engage the community as full partners.

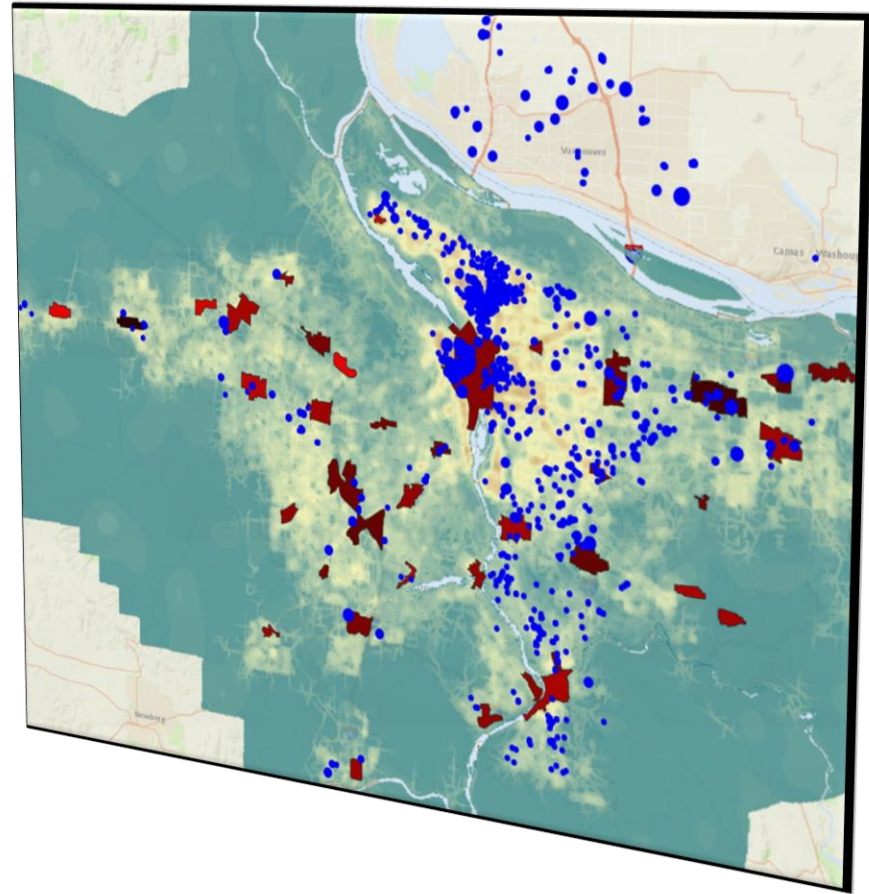
All communities experience the benefits and share the costs of growth and change.

All people are able and have the opportunity to achieve their full potential and realize their vision for success.

The Power of Maps



The Limitations of Maps



HOPE

Healthy Oregon
Partnerships
for Equity





THE REGIONAL EQUITY ATLAS

Metropolitan Portland's Geography of Opportunity

2007

PART I **EQUITY, WHO WE ARE,** **WHERE WE LIVE**

PART 2 **ACCESS TO RESOURCES**

Chapter 1 Regional Equity: A Framework for Understanding Our Communities

A Few Equity Atlas Mapping Conventions

Chapter 2 Demographics in the Region

Chapter 3 Housing

Chapter 4 Schools

Chapter 5 Transportation

Money Matters—The Landscape of Public Resources

Chapter 6 Health and Design

Chapter 7 Parks and Greenspaces

Chapter 8 Conclusions

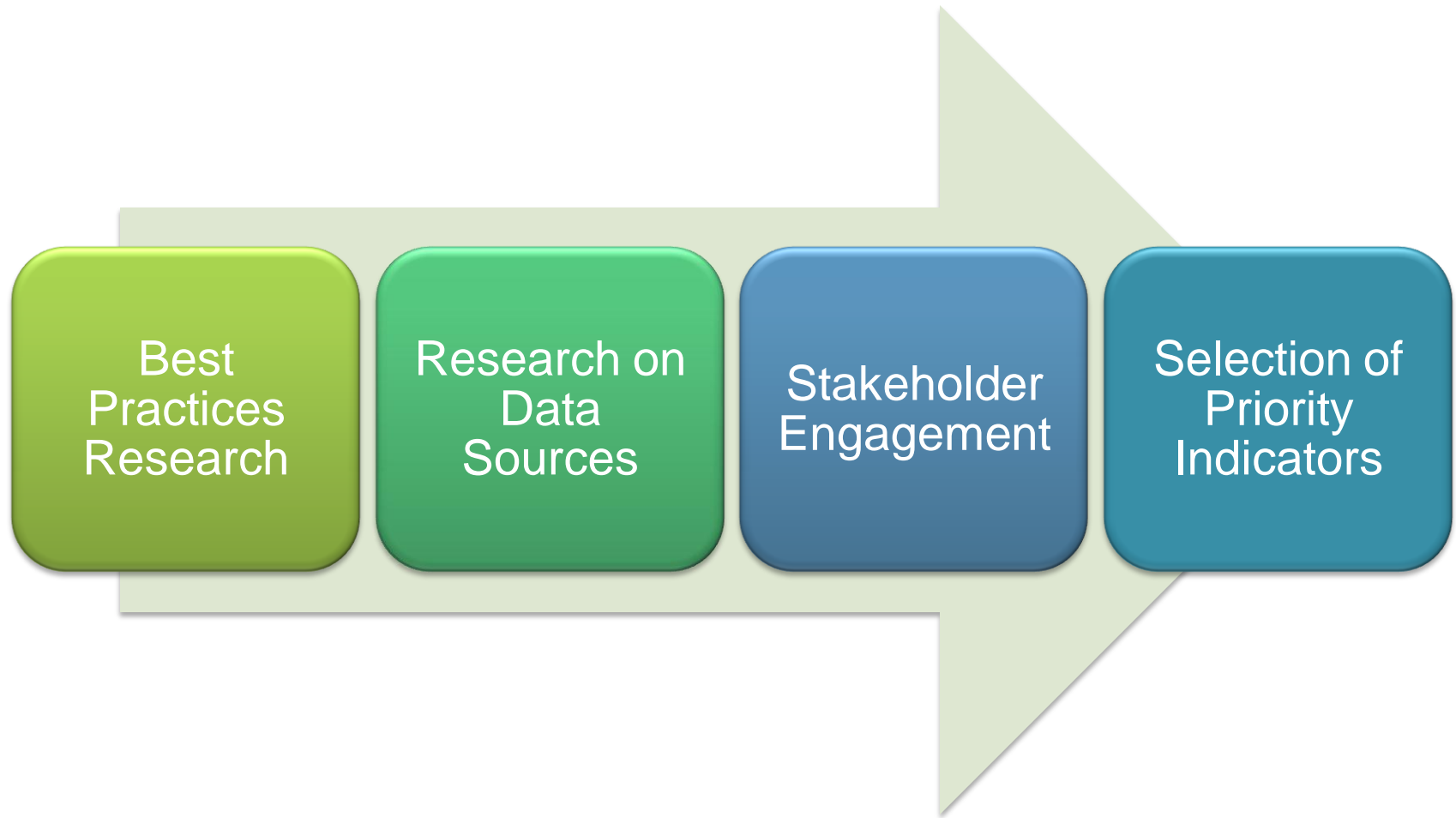
Example of Atlas's Impact

Nature in the Neighborhoods Capital Grant Program



Metro | *Making a great place*

Identifying Which Issues to Map



- Race & Ethnicity
- Income
- Age
- Population Density
- Household Composition

Demographic Indicators



- Community
- Democratic Participation
- Economic Opportunity
- Education
- Food
- Health Care
- Healthy Environment
- Housing
- Parks and Nature
- Services and Amenities
- Transportation

Access Indicators



- Preventive Care
- Primary Care Facilities and Health Clinics
- Providers that Accept Medicaid and Medicare

Health Care



- Body Mass Index
- Birth Outcomes
- Asthma
- Diabetes
- Cardiovascular Disease

Health Outcomes



Orientation to the Maps

Coalition for a Livable Future - Equity Atlas 2.0

File Export Locate Options Indicators Tables and Charts Windows Help

Add/Remove Indicators...
About Indicators

Table of Contents

Analysis Units

- Counties

Indicators

Map Layers

- Oregon Metro Regional Basemap
Opacity
- RLIS Thematic Map Data
Opacity
- Schools
- Transportation
- Natural Resources
- Major rivers and w...



Clark County

Washington County

Multnomah County

Clackamas County

Our Region

City Boundaries (Portland-Vancouver Metropolitan Area)





Maps and Analysis

These pages include several dozen key Equity Atlas maps along with an initial analysis in each of the issue areas listed below. **How to Read the Atlas Maps** provides important context for understanding the maps and scoring system that may be helpful as you view the maps.

Population

- **Demographics:** Population Density, Populations of Color, Race, Income, Age, Household Composition, Immigrants

Health

- **Health Care:** Prenatal Care, Well-Child Visits, Lack of Preventive Care
- **Health Outcome:** Healthy Eating Active Living, Obesity, Asthma, Cardiovascular Disease, Diabetes

Access to Opportunity

- **Community:** Proximity to Community Amenities, Proximity to Social and Cultural Institutions
- **Democratic Participation:** Voter Registration and Participation
- **Economic Opportunity:** Transit Access to Family Wage Jobs, Transportation Access to Jobs
- **Education:** Public Schools, School Achievement Levels, Graduation Rates
- **Food:** Proximity to Supermarkets, Grocery Stores and Fresh Food, Proximity to Supplemental Food Programs, Proximity to Unhealthy Food Sources, Community Gardens
- **Healthy Environment:** Air Quality
- **Housing:** Housing Affordability, Minority Home Ownership Gap, Gentrification and Displacement, Housing Accessibility, Access to Home Loans, Housing Tenure
- **Parks and Natural Areas:** Proximity to Parks and Natural Areas, Proximity to Greenspace and Outdoor Recreation, Proximity to Greenspace and Outdoor Recreation in Relationship to Demographic Patterns
- **Services and Amenities:** Proximity to Financial and Retail Services, Proximity to Public and Human Services
- **Transportation:** Transit Access, Walkability, Bikability, Pedestrian Composite

🔍 enter search term

Create Your Own Maps

Explore equity conditions across the region, analyze the issues that interest you, and create your own maps.

[Equity Atlas Mapping Tool](#)

powered by the Metro Context Tool Engine

User Guide & Tutorials

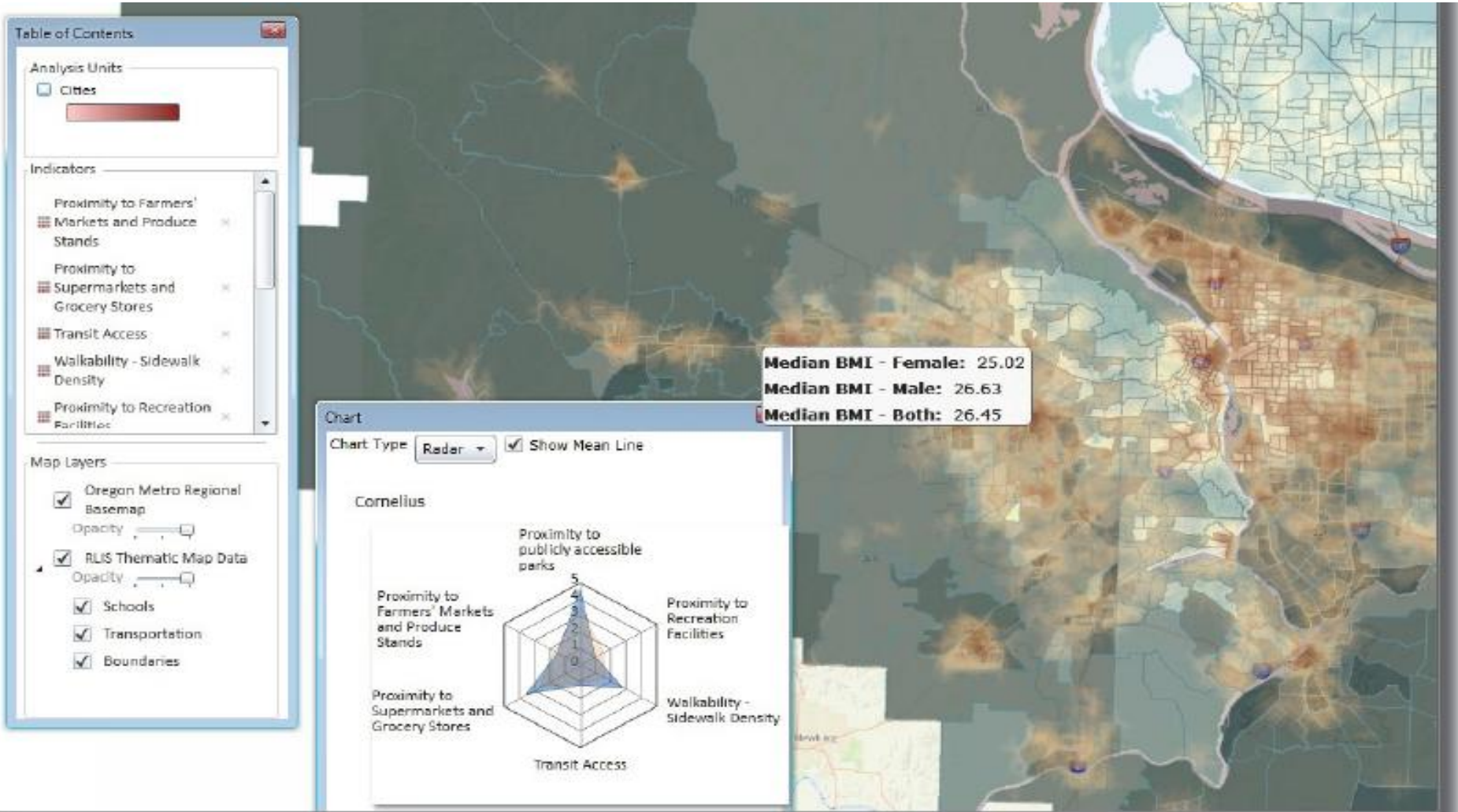
[Step-by-step instructions](#) for using the online mapping tool.

Maps & Analysis

Introduction to key maps along with an initial analysis of findings.

Online Mapping Tool

www.equityatlas.org

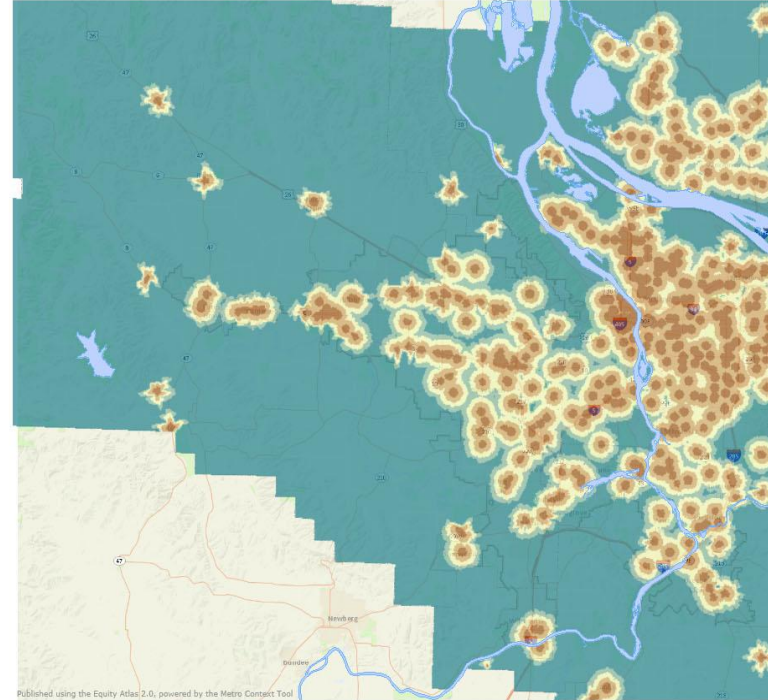


Types of Maps

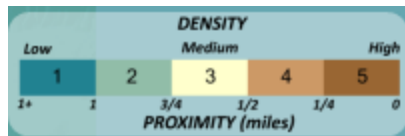
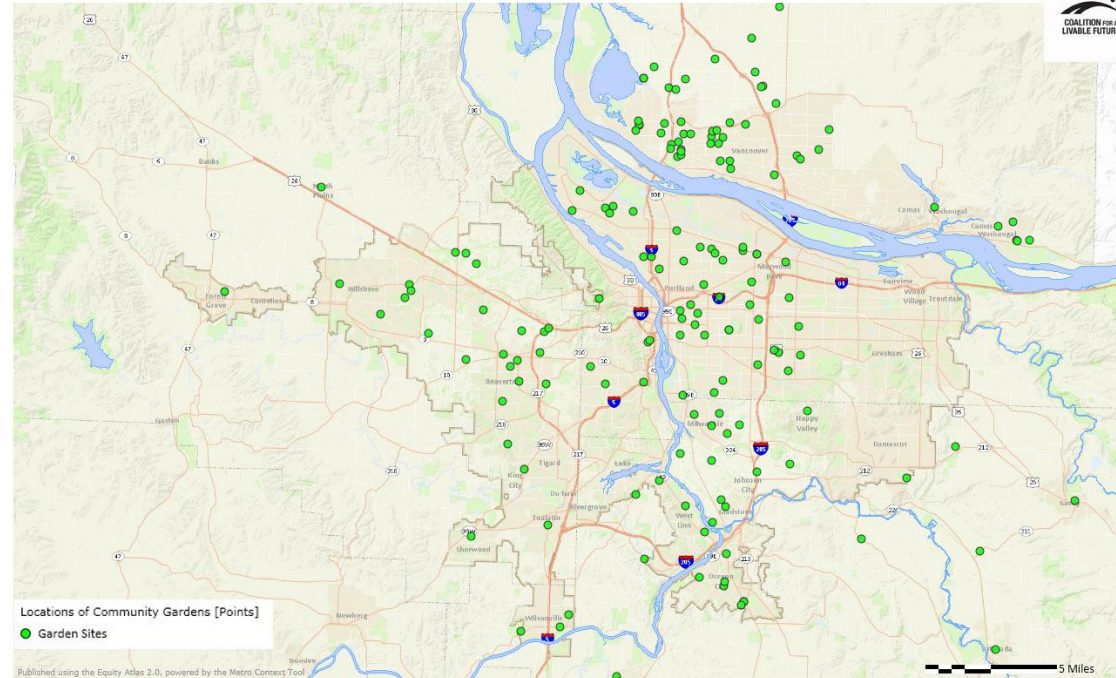
Heatmaps

Shapes

Proximity to Supermarkets and Grocery Stores



Locations of Community Gardens

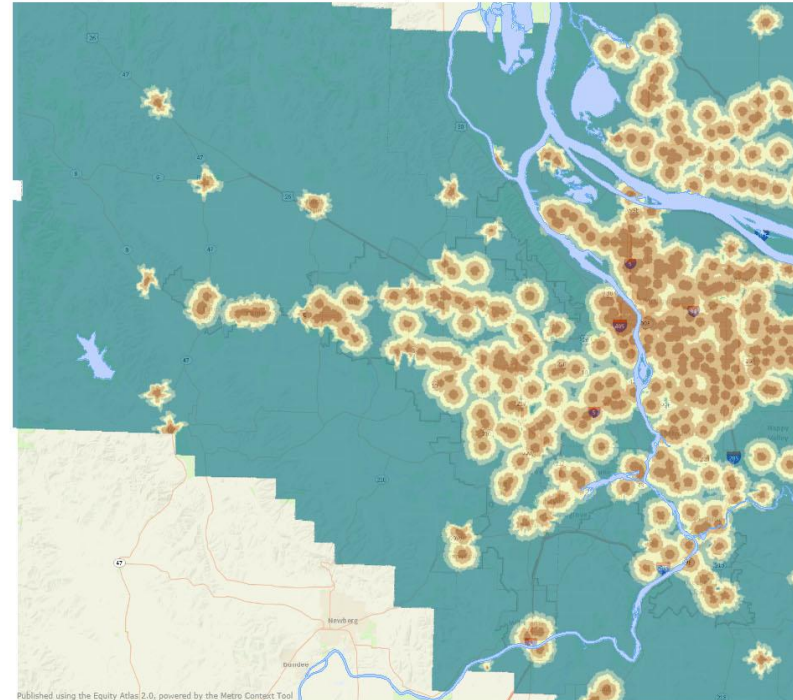


Types of Maps

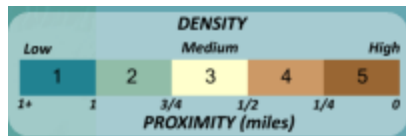
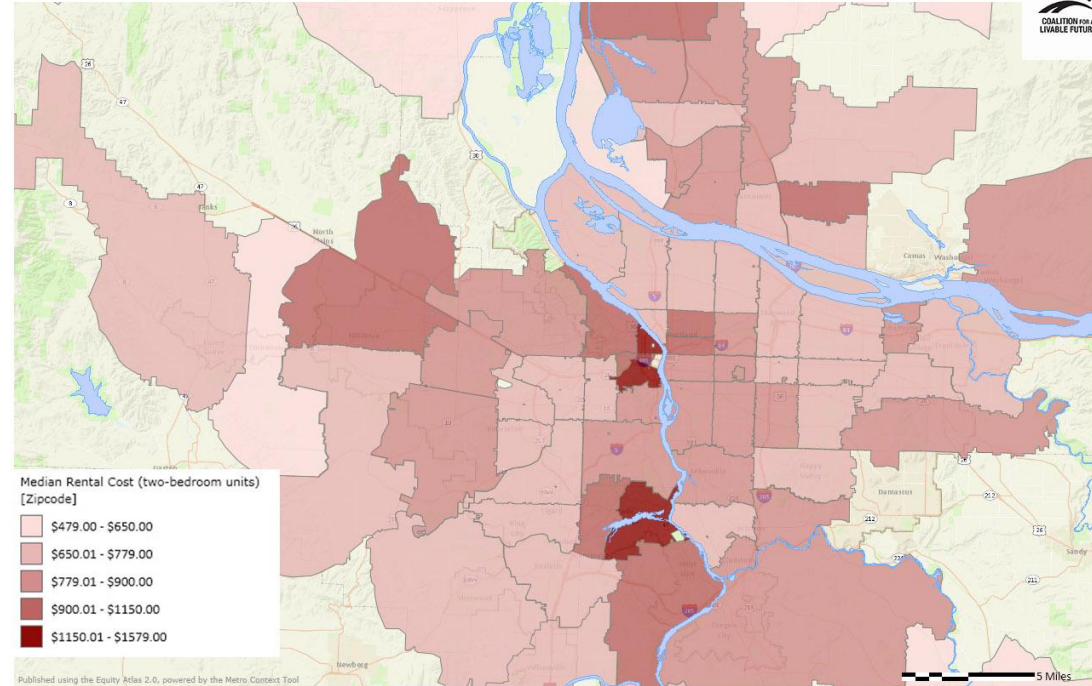
Heatmaps

Shapes

Proximity to Supermarkets and Grocery Stores



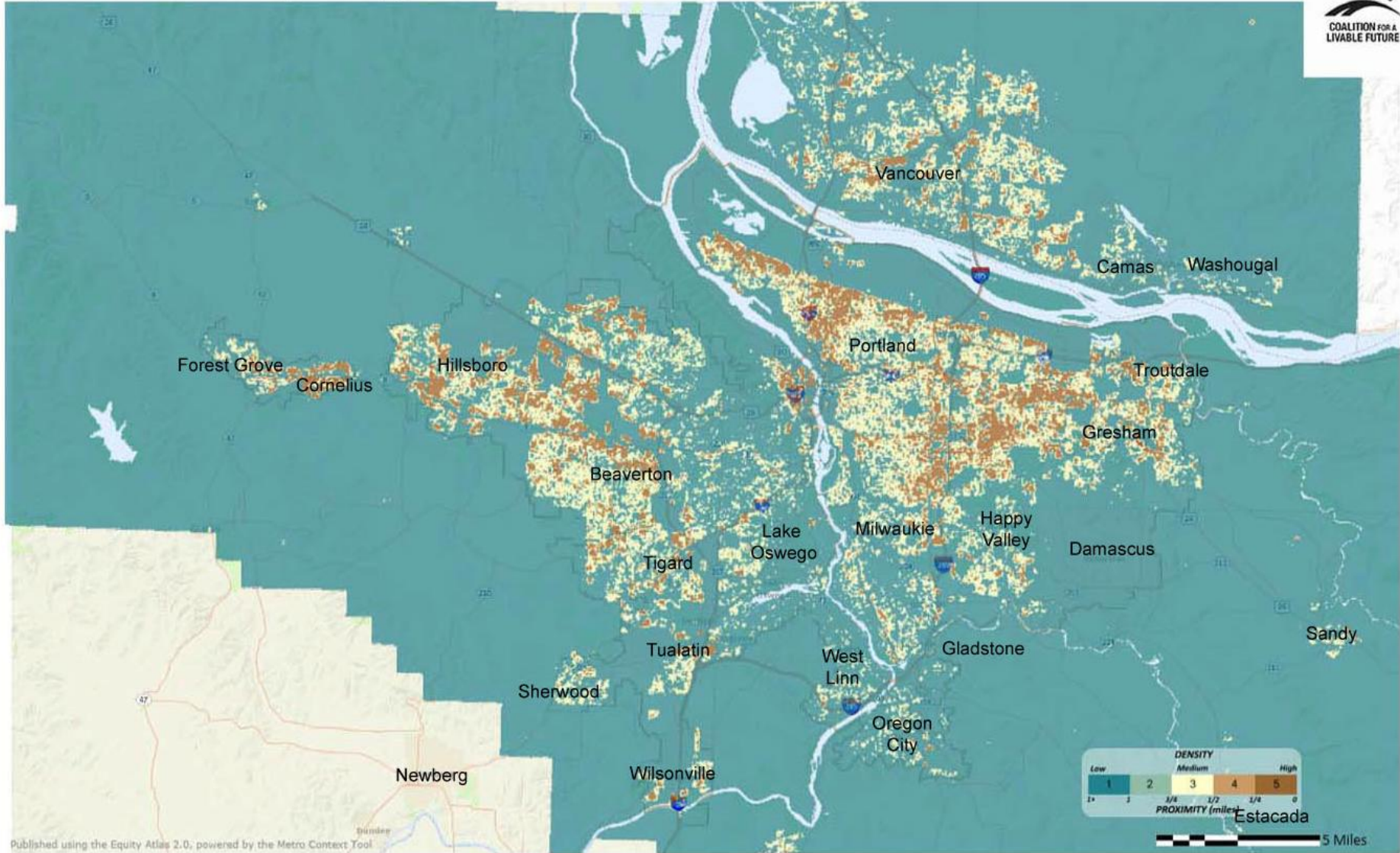
Median Rental Cost (2-bedroom)



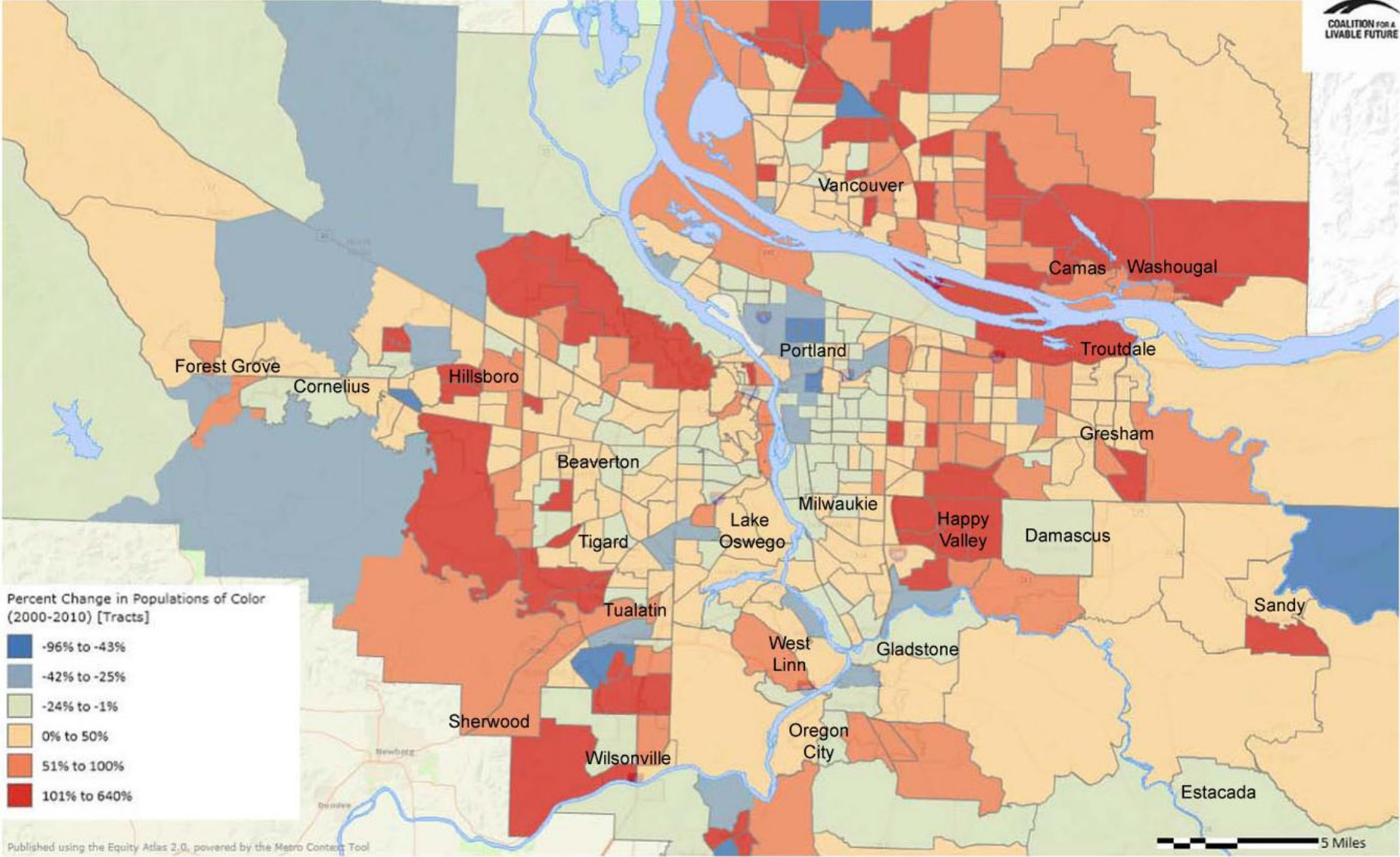
Key Findings



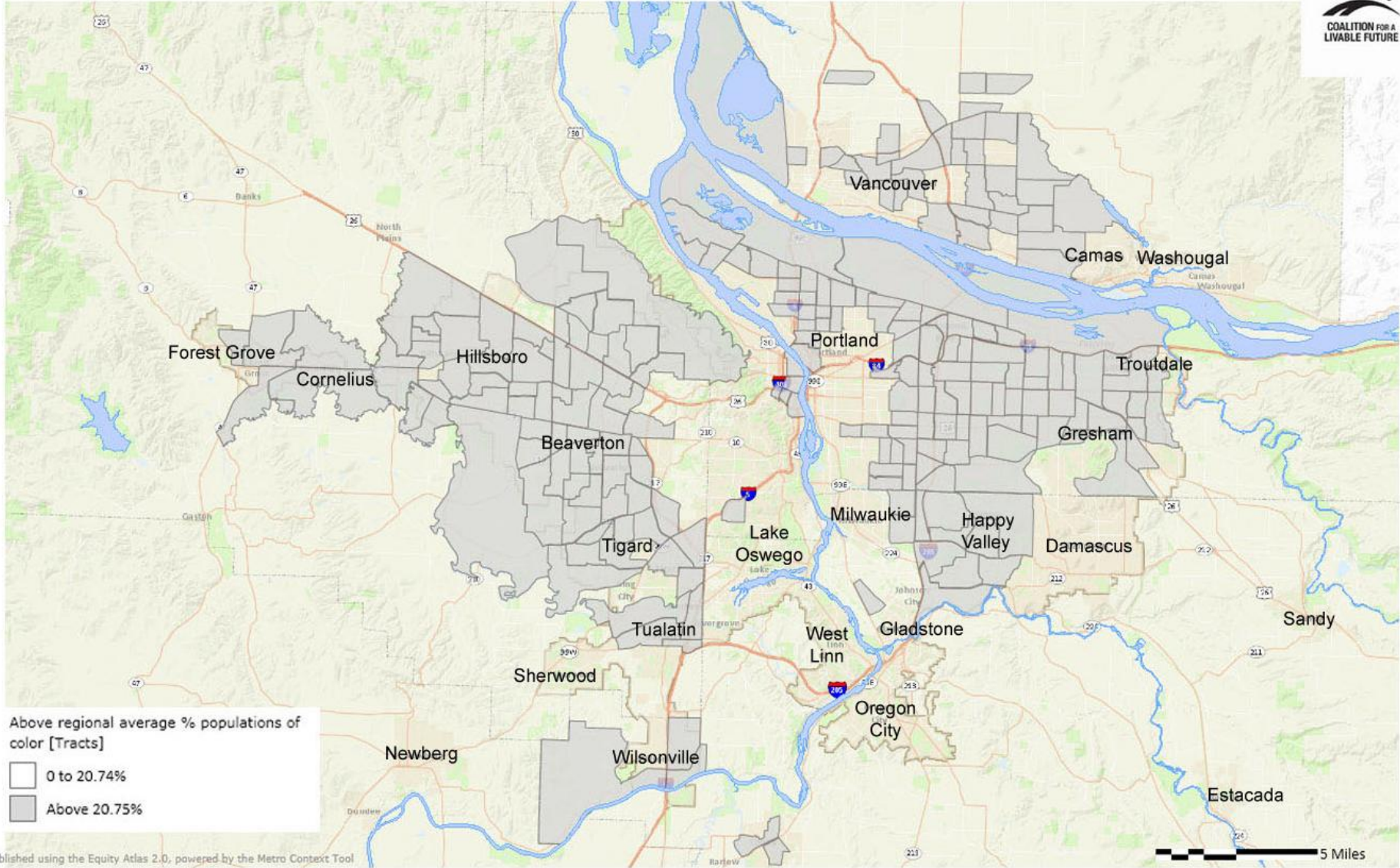
Populations of Color (Density per Acre)



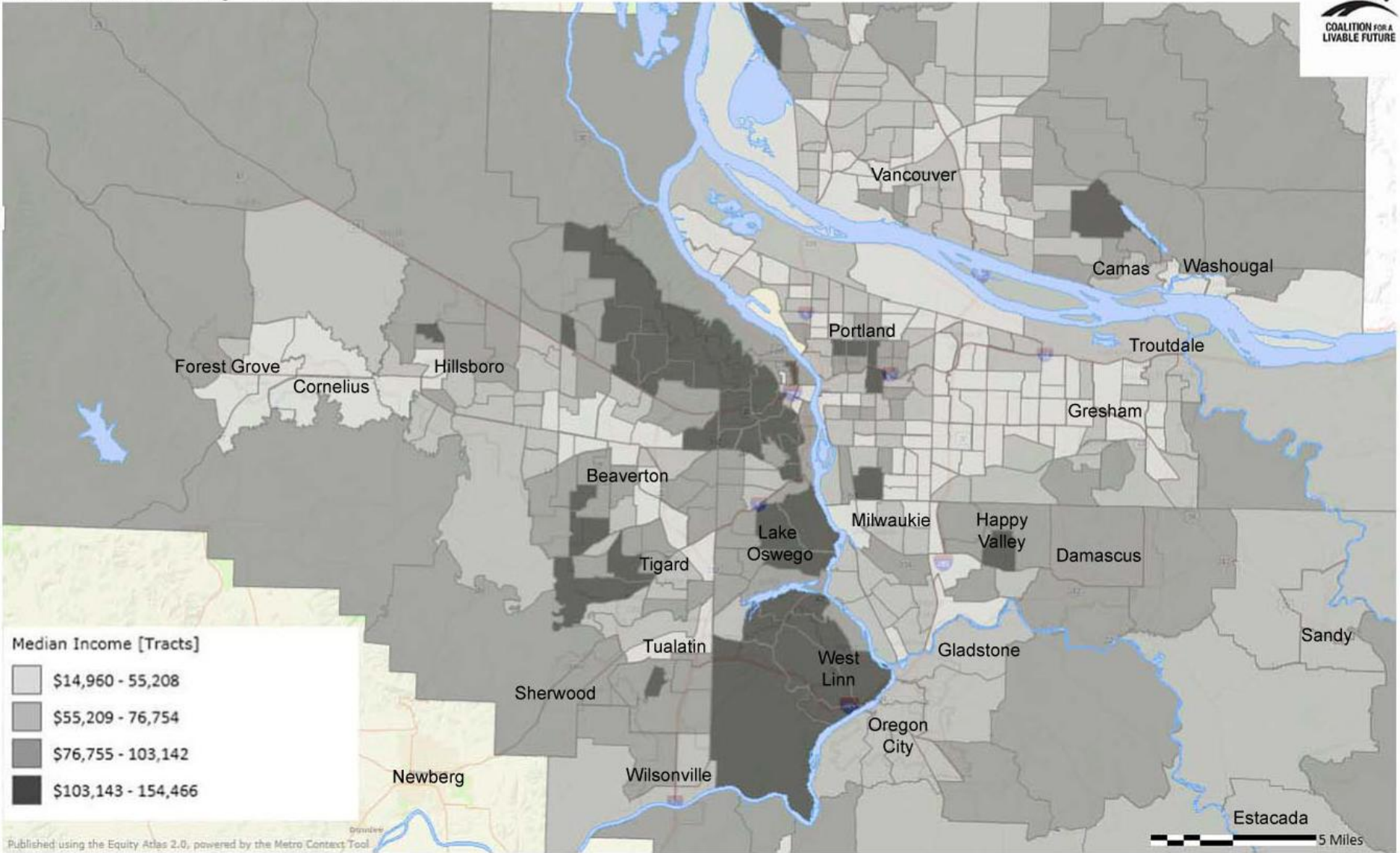
Percent Change in Populations of Color (2000-2010)



Above Regional Average Percent Populations of Color

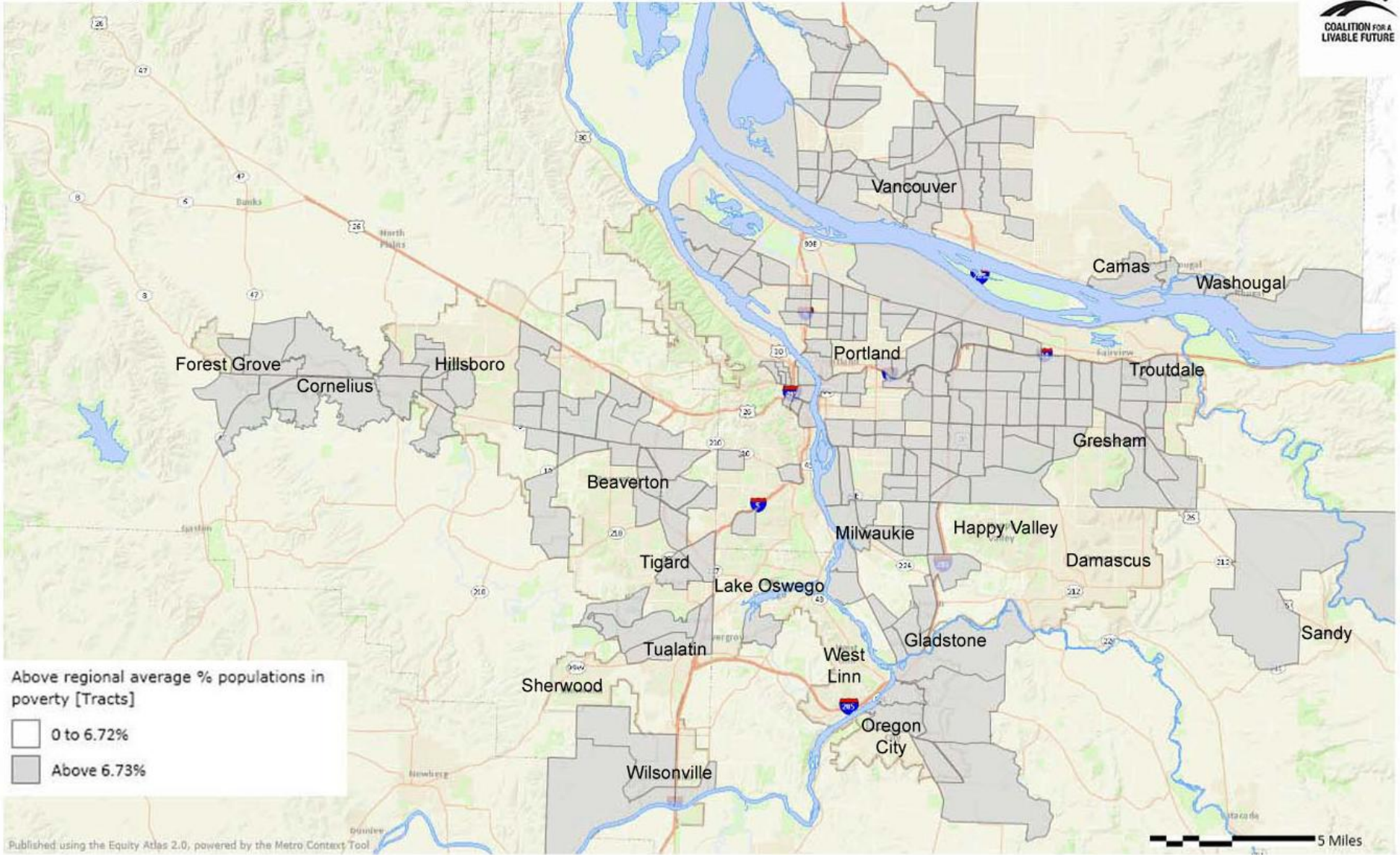


Median Income by Census Tract

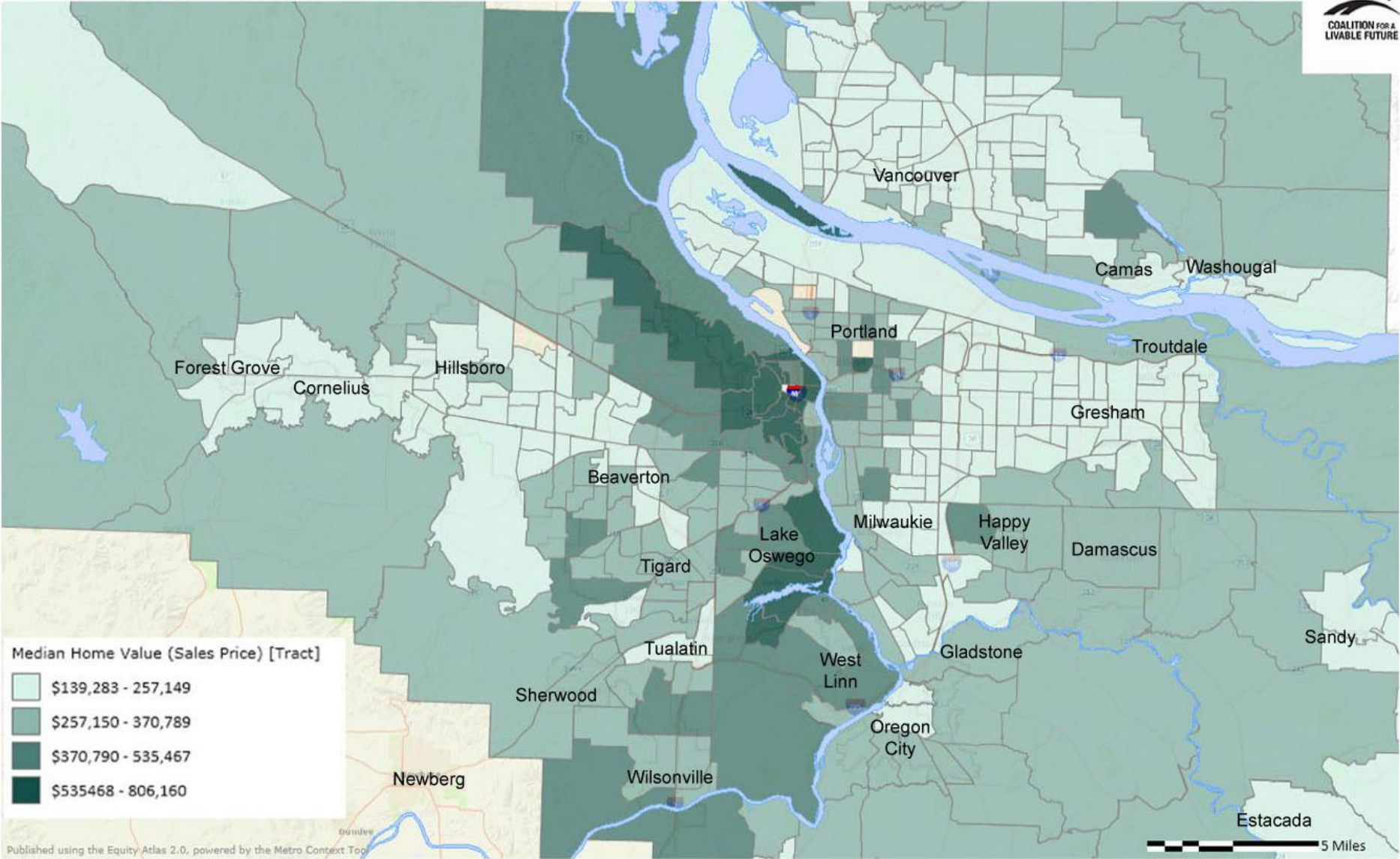


Published using the Equity Atlas 2.0, powered by the Metro Context Tool

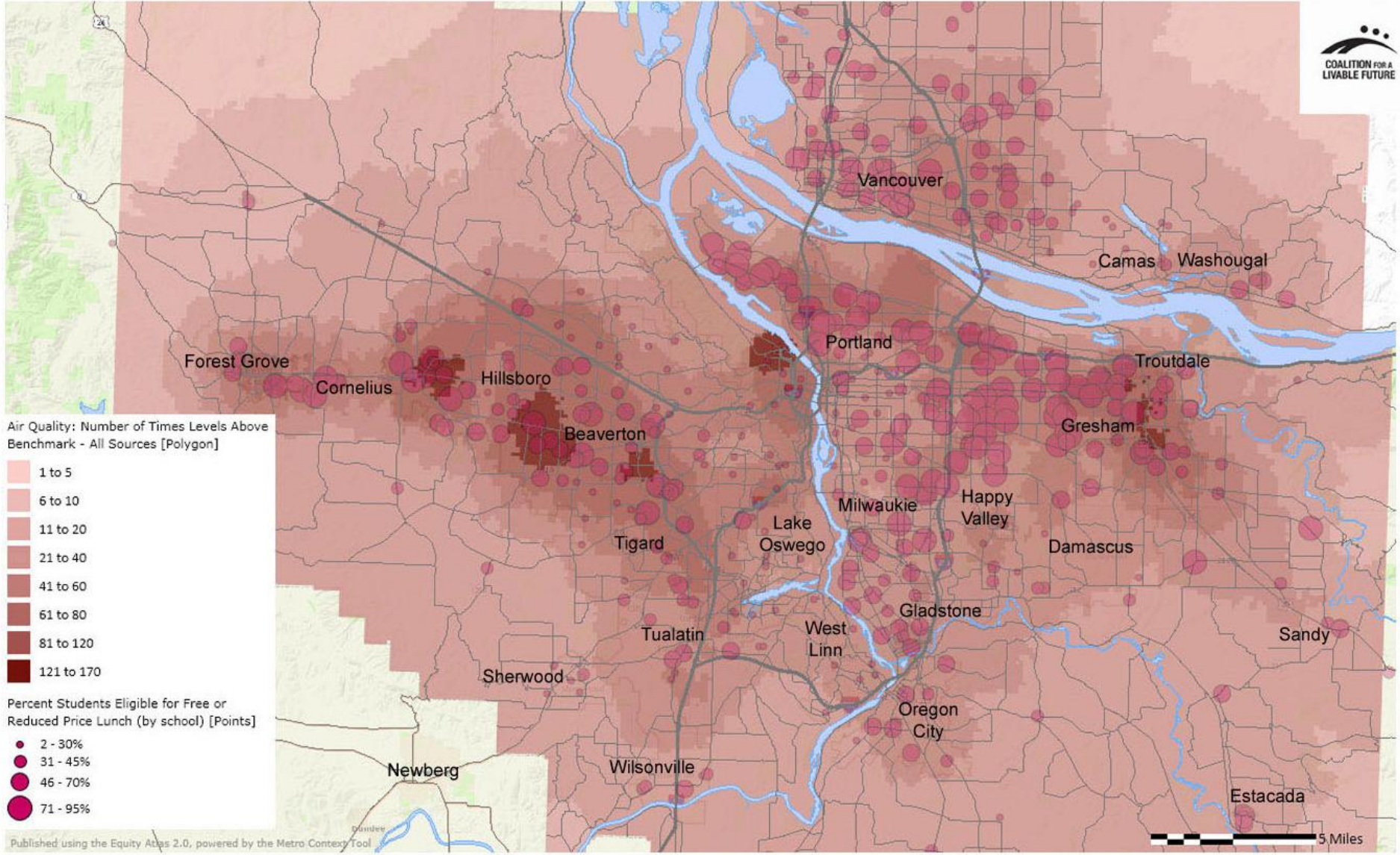
Above Regional Average Percent Populations in Poverty



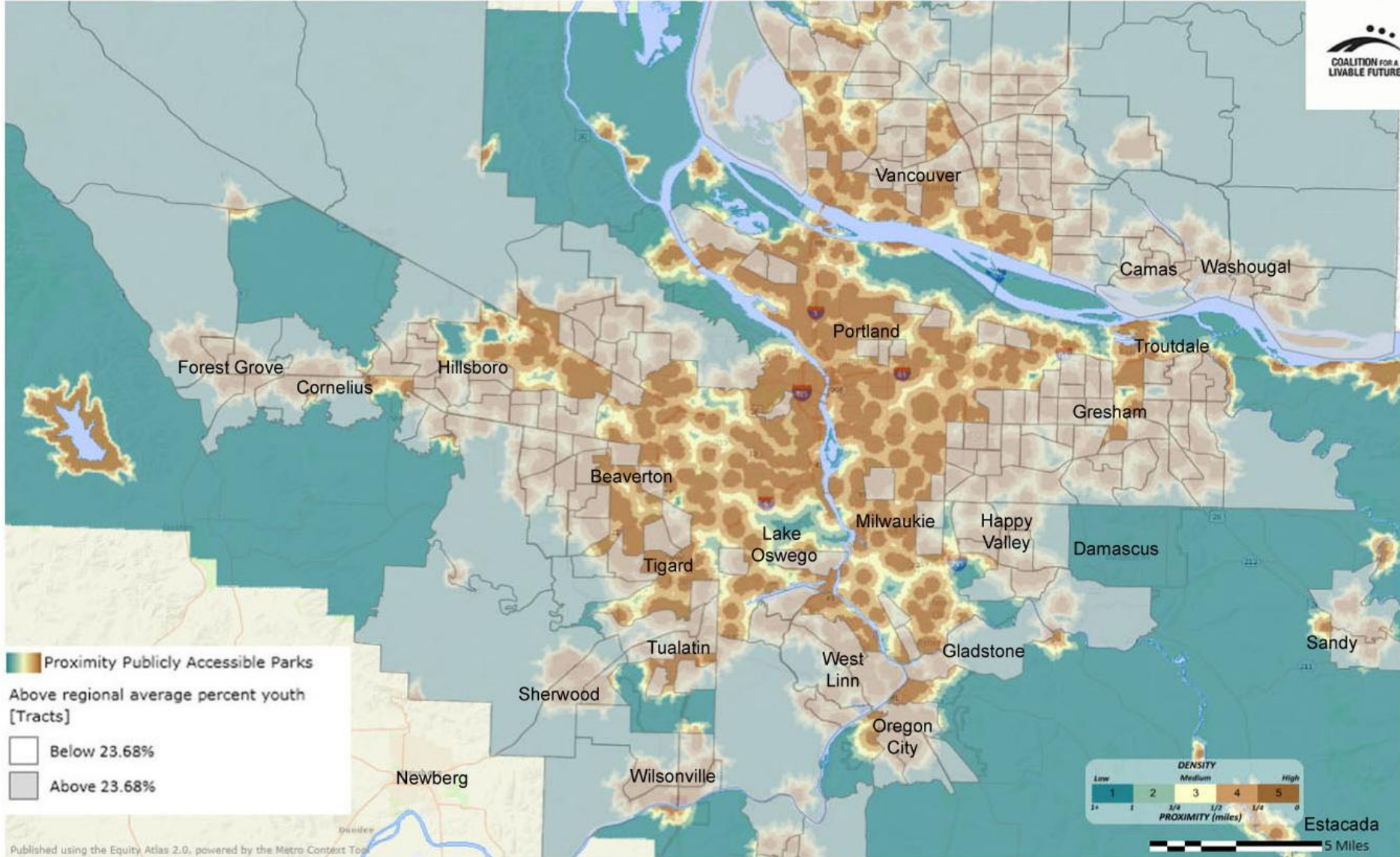
Median Home Value (sales price)



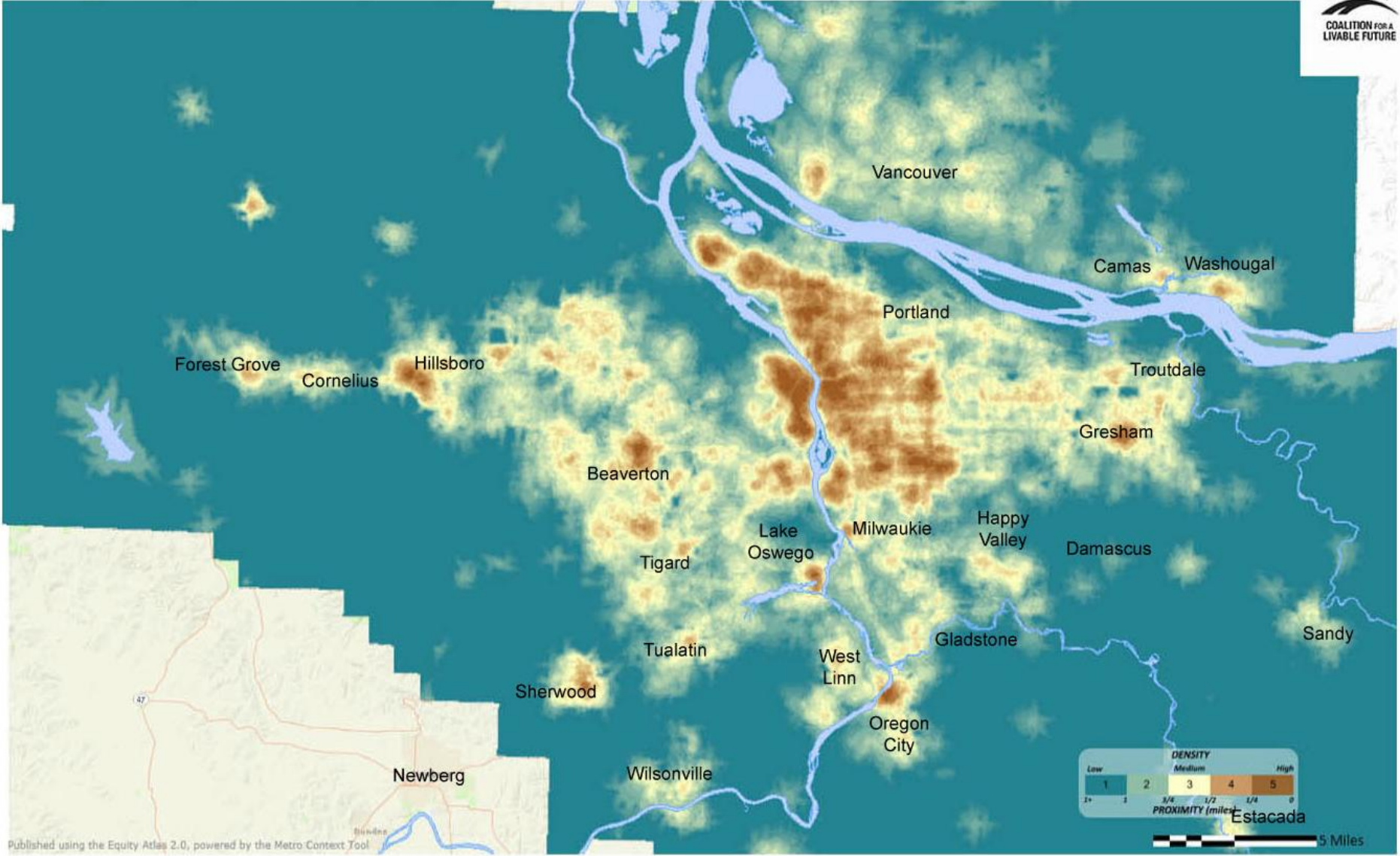
Air Quality in Relationship to Percent Students Eligible for Free or Reduced Price Lunch, Freeways and Arterial Streets



Proximity to Publicly Accessible Parks in Relationship to Areas with Above Regional Average Percent Youth (Ages 0-17)

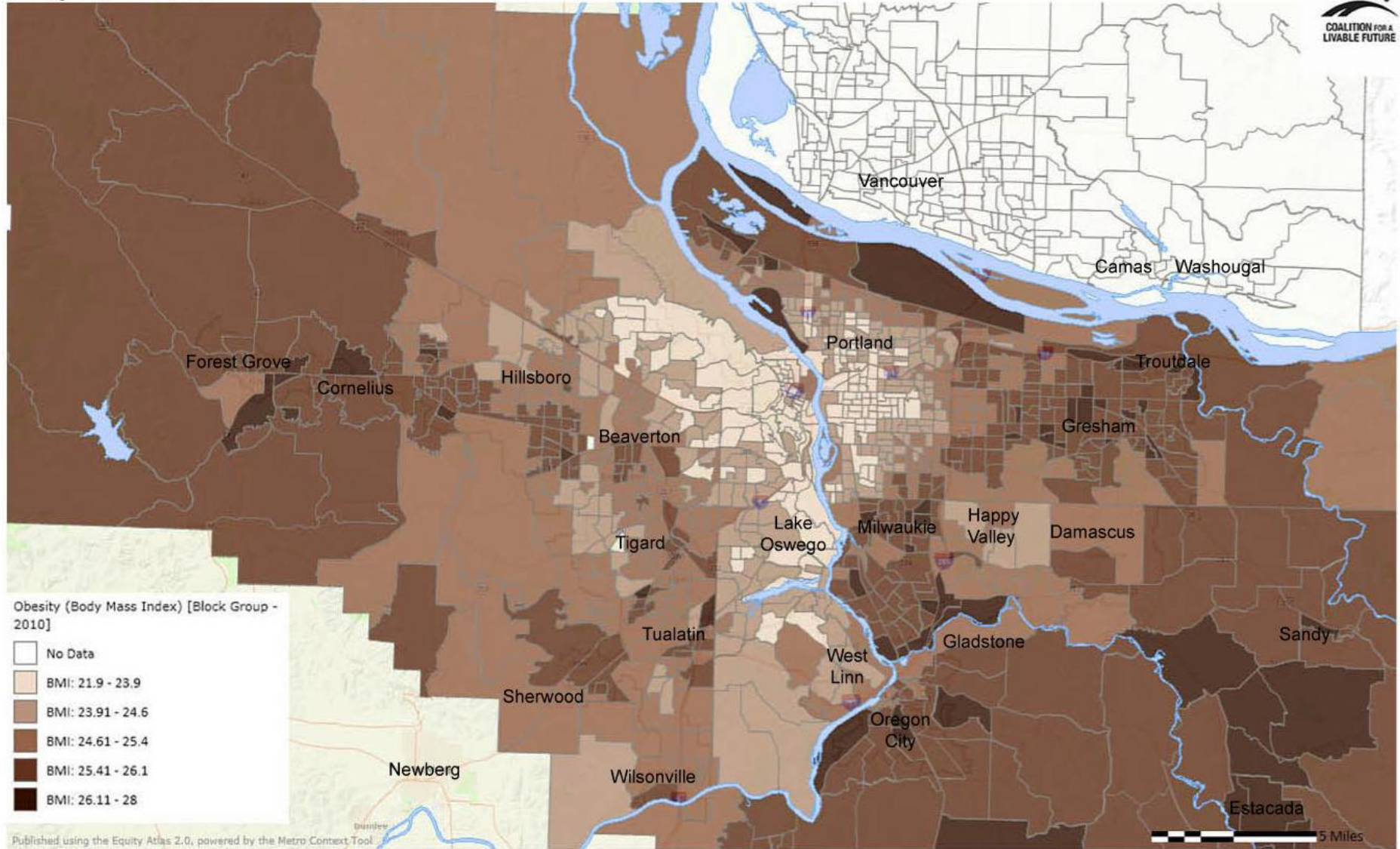


Healthy Eating Active Living Composite Heatmap

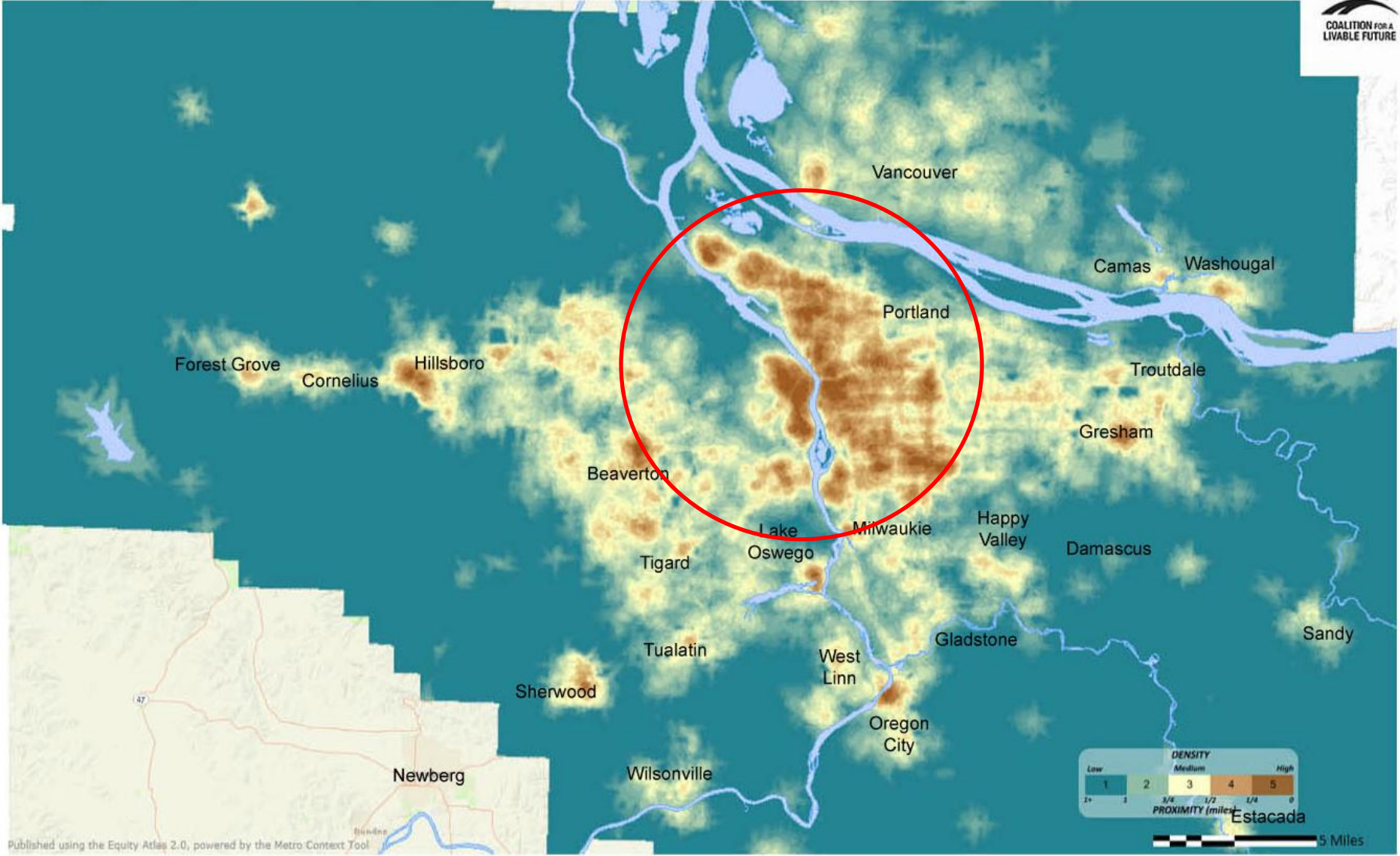


Published using the Equity Atlas 2.0, powered by the Metro Context Tool

Body Mass Index

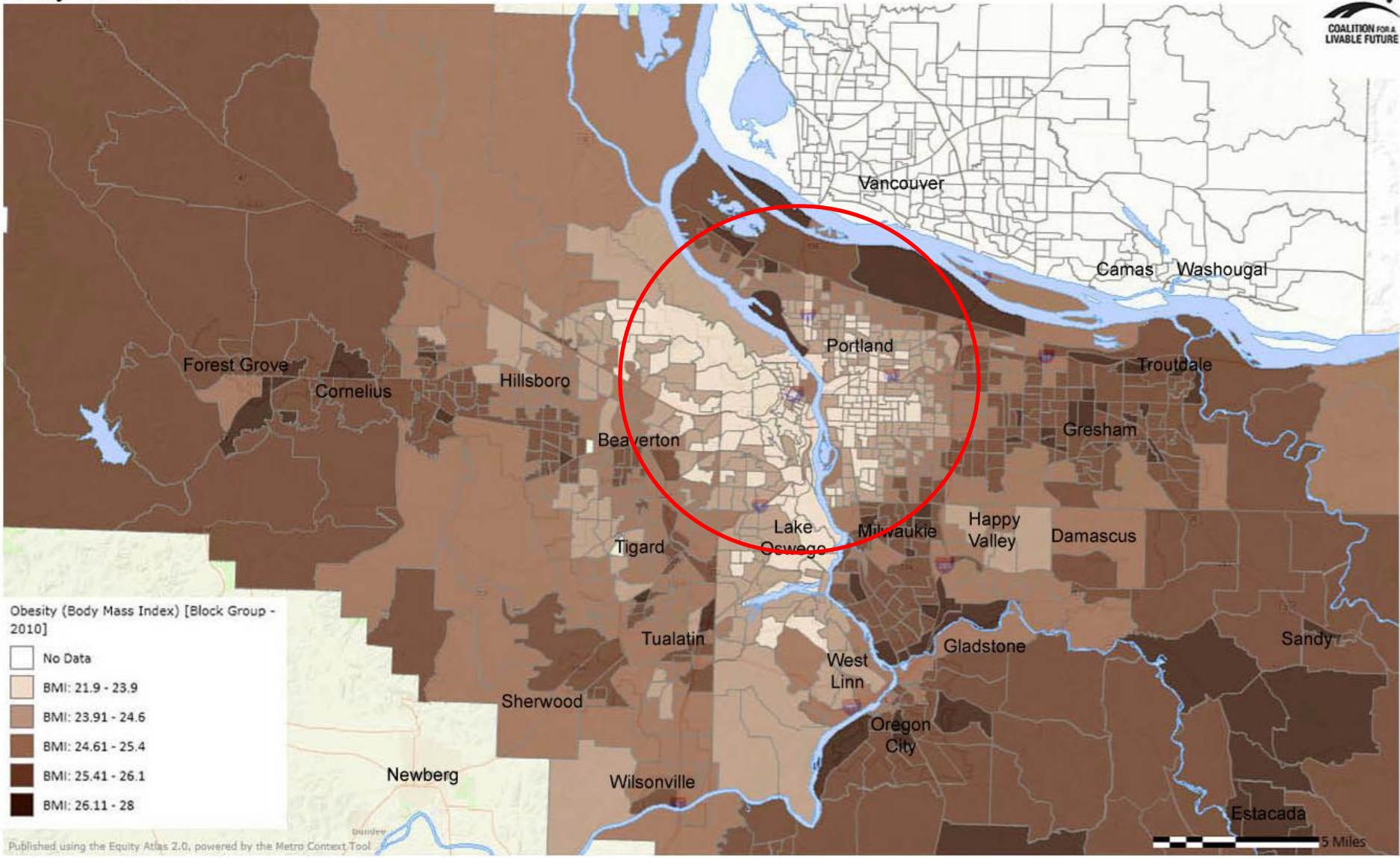


Healthy Eating Active Living Composite Heatmap

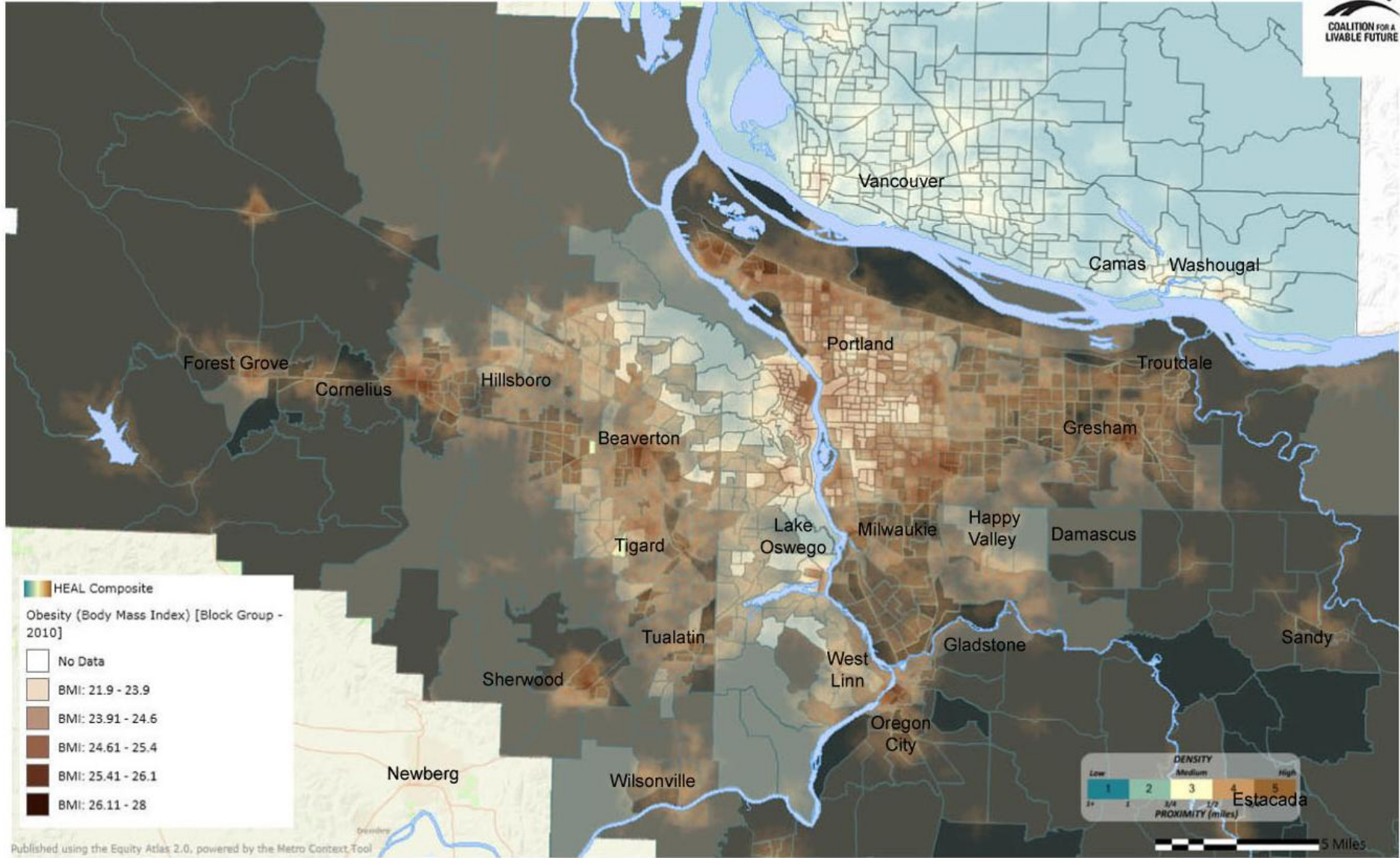


Published using the Equity Atlas 2.0, powered by the Metro Context Tool

Body Mass Index

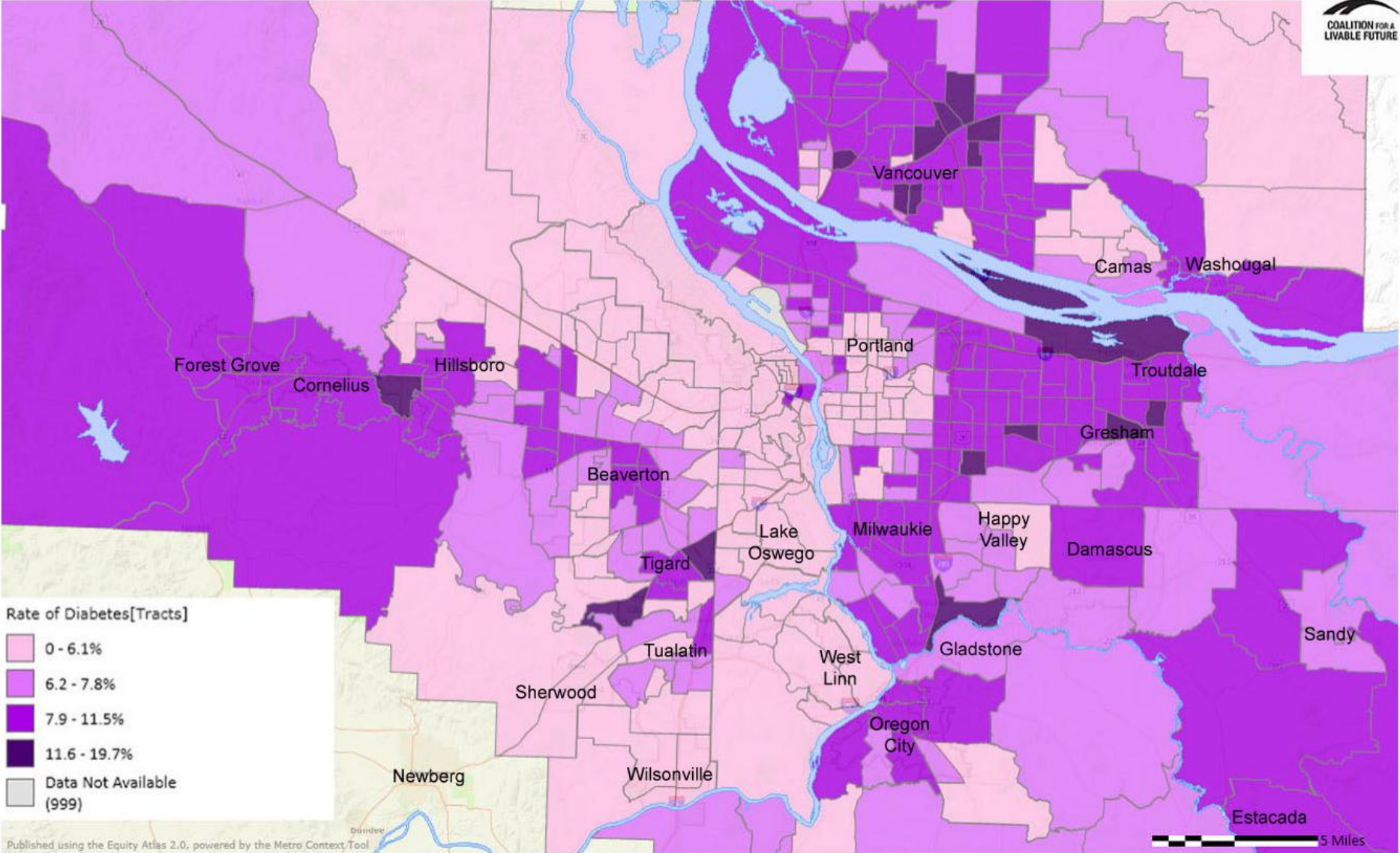


Body Mass Index in Relationship to Healthy Eating Active Living Composite

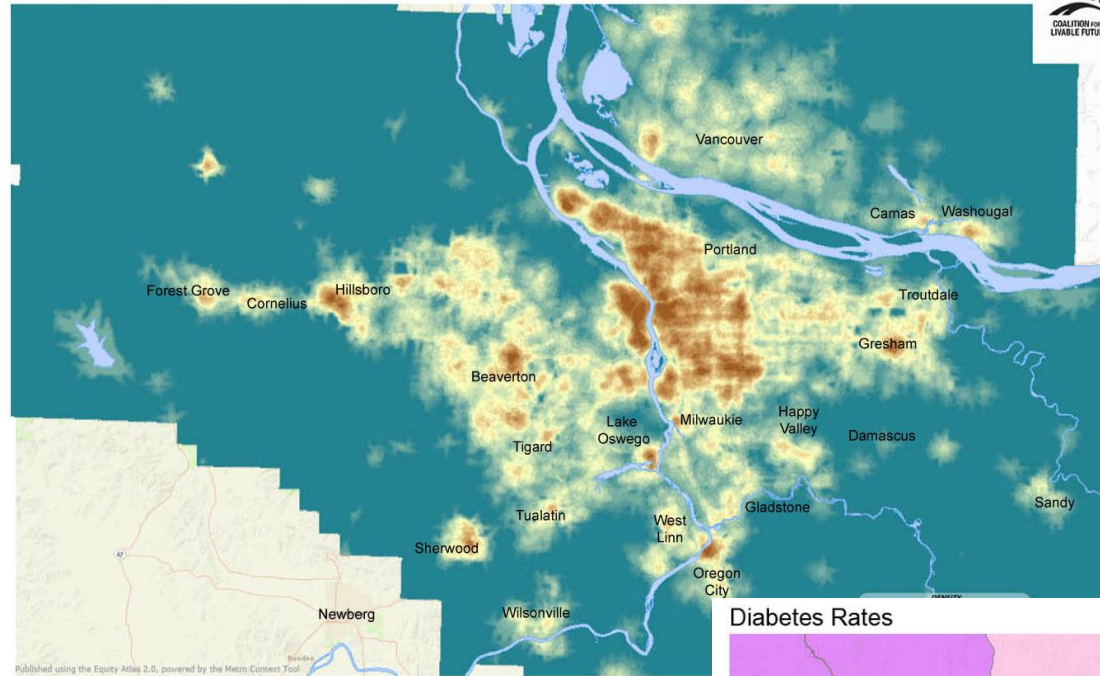


Published using the Equity Atlas 2.0, powered by the Metro Context Tool

Diabetes Rates

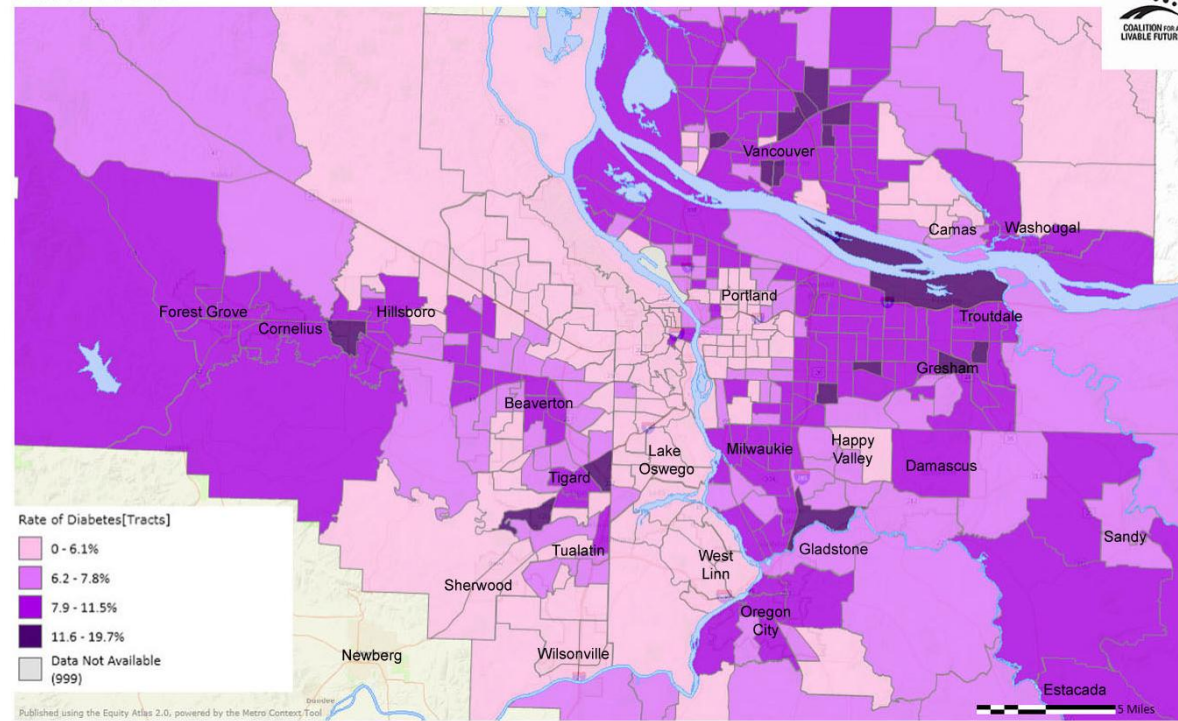


Healthy Eating Active Living Composite Heatmap



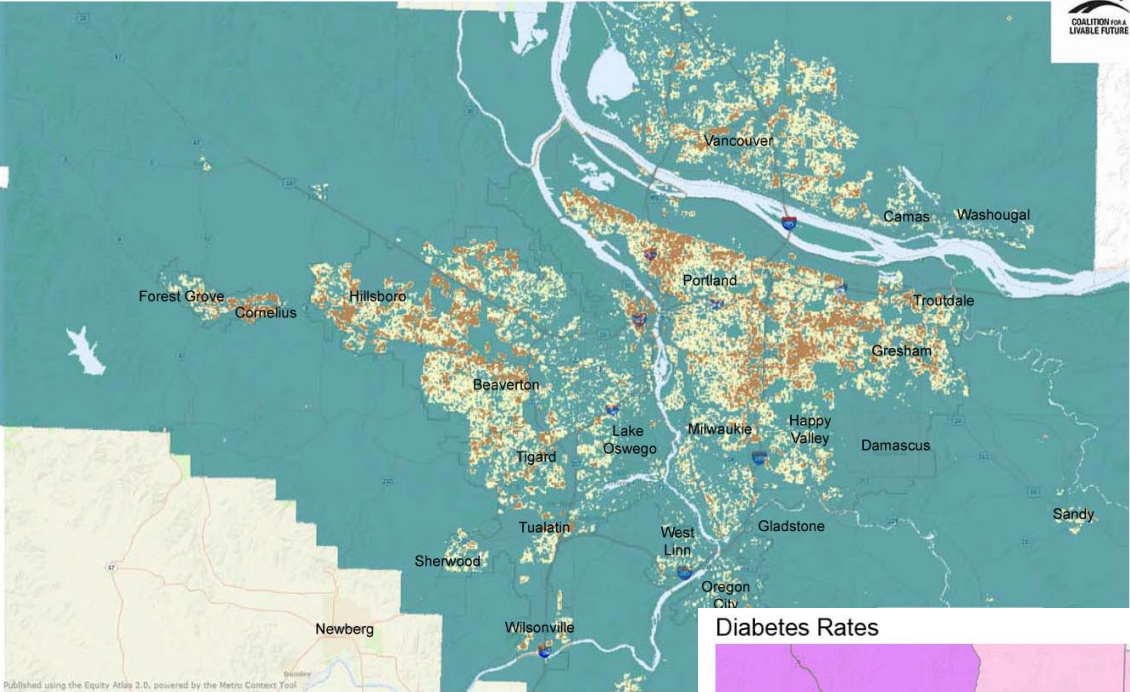
Published using the Equity Atlas 2.0, powered by the Metro Context Tool

Diabetes Rates



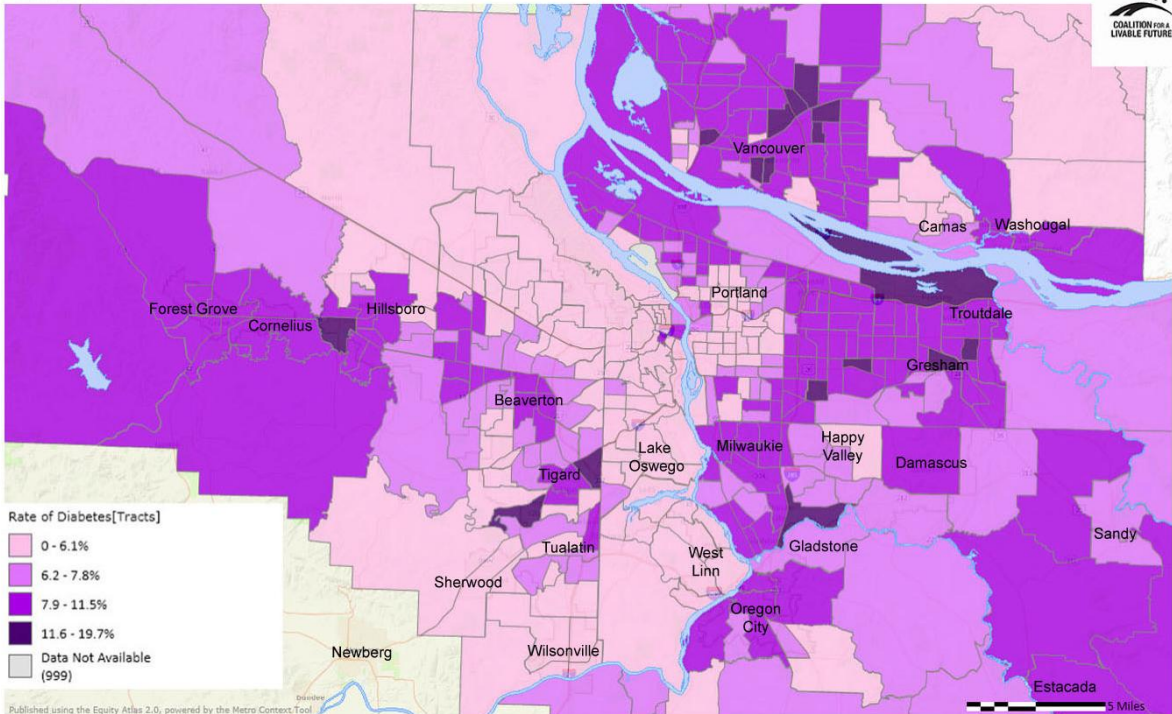
Published using the Equity Atlas 2.0, powered by the Metro Context Tool

Populations of Color (Density per Acre)



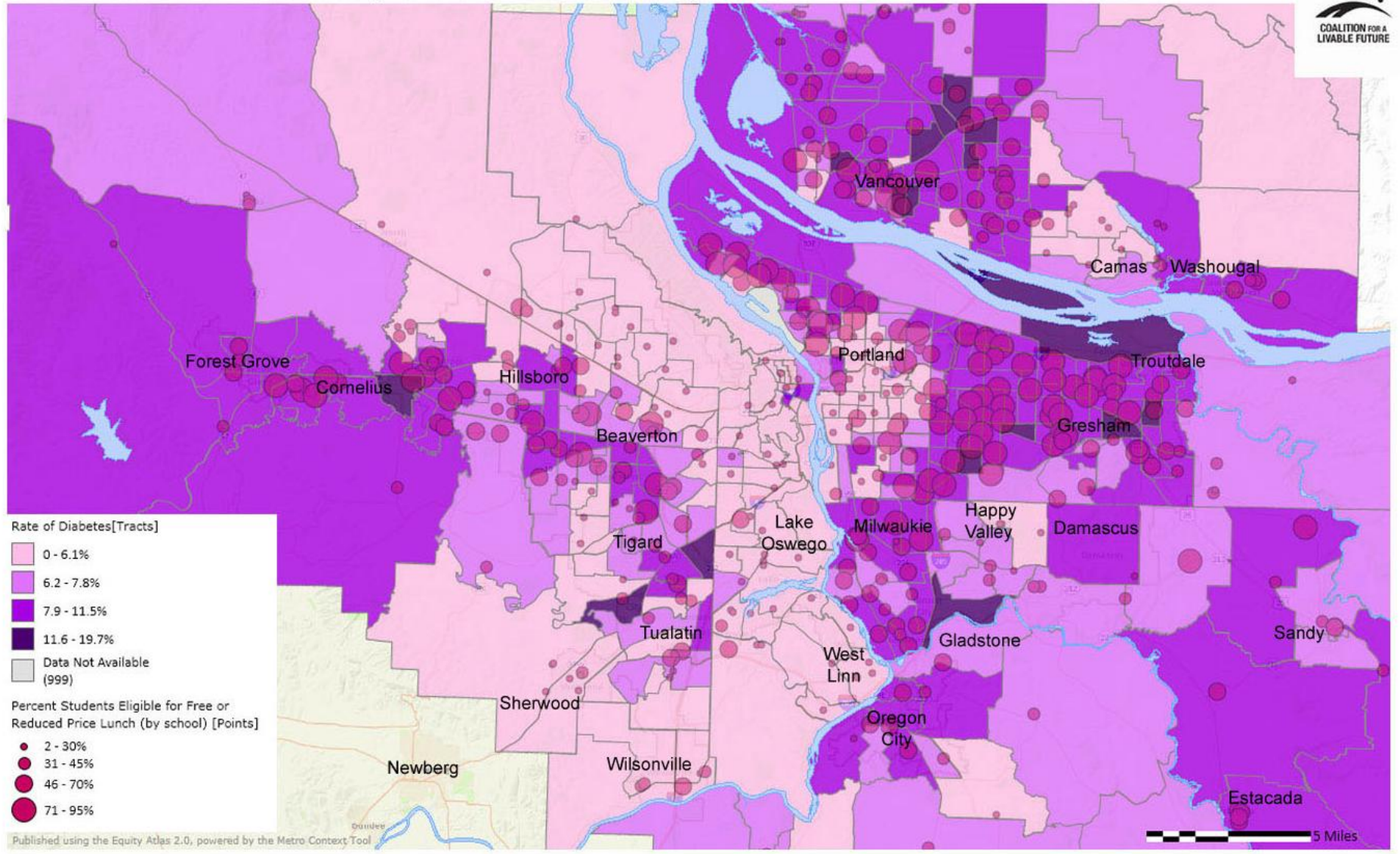
Published using the Equity Atlas 2.0, powered by the Metro Context Tool

Diabetes Rates

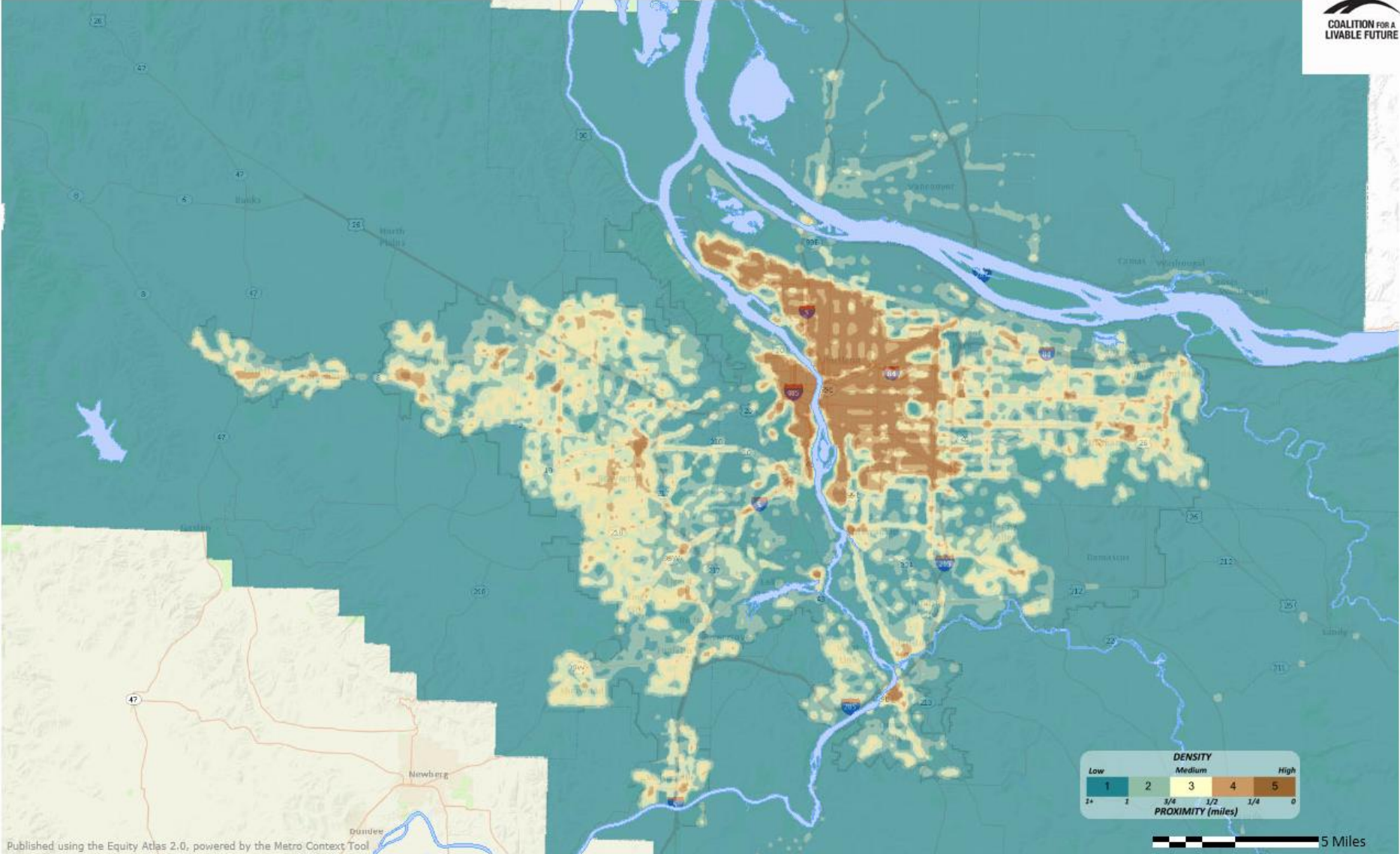


Published using the Equity Atlas 2.0, powered by the Metro Context Tool

Diabetes Rates in Relationship to Percent Students Eligible for Free or Reduced Price Lunch



Pedestrian Composite Heatmap



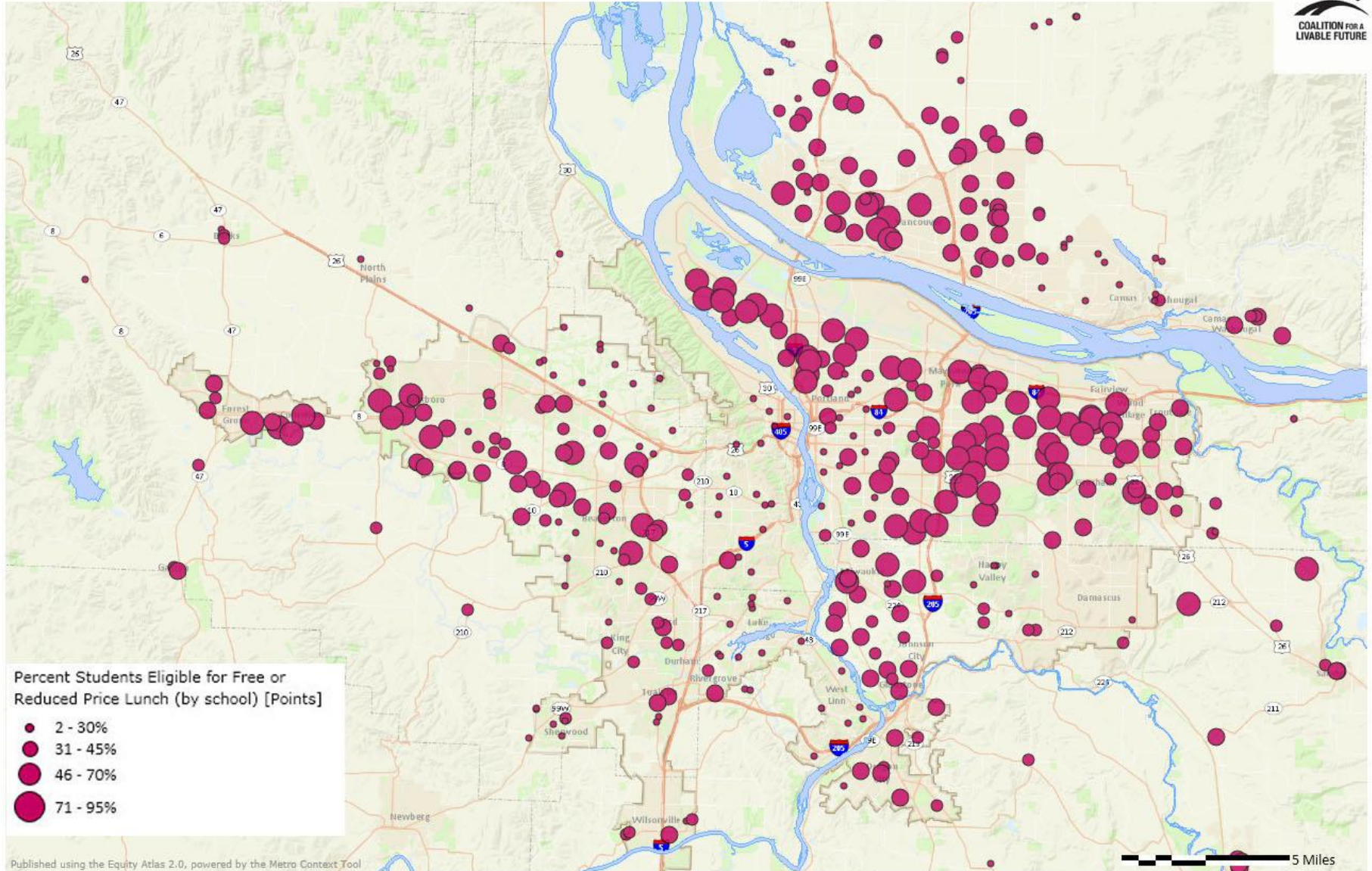
5 Miles

Published using the Equity Atlas 2.0, powered by the Metro Context Tool

3rd Grade Reading Levels

Percent Minority Students (by School)

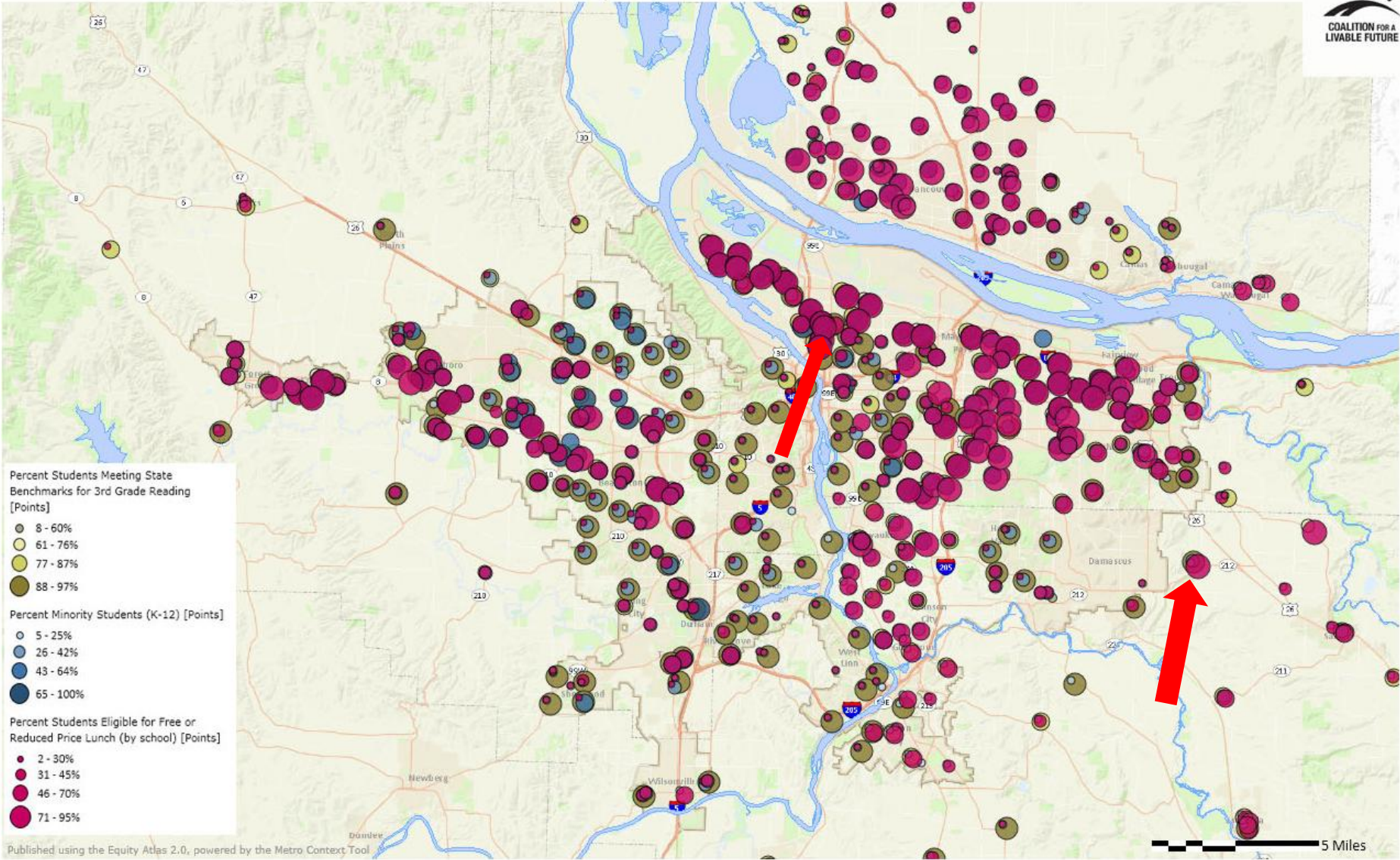
Percent Students Eligible for Free or Reduced Price Lunch (by School)



Percent Students Eligible for Free or Reduced Price Lunch (by school) [Points]

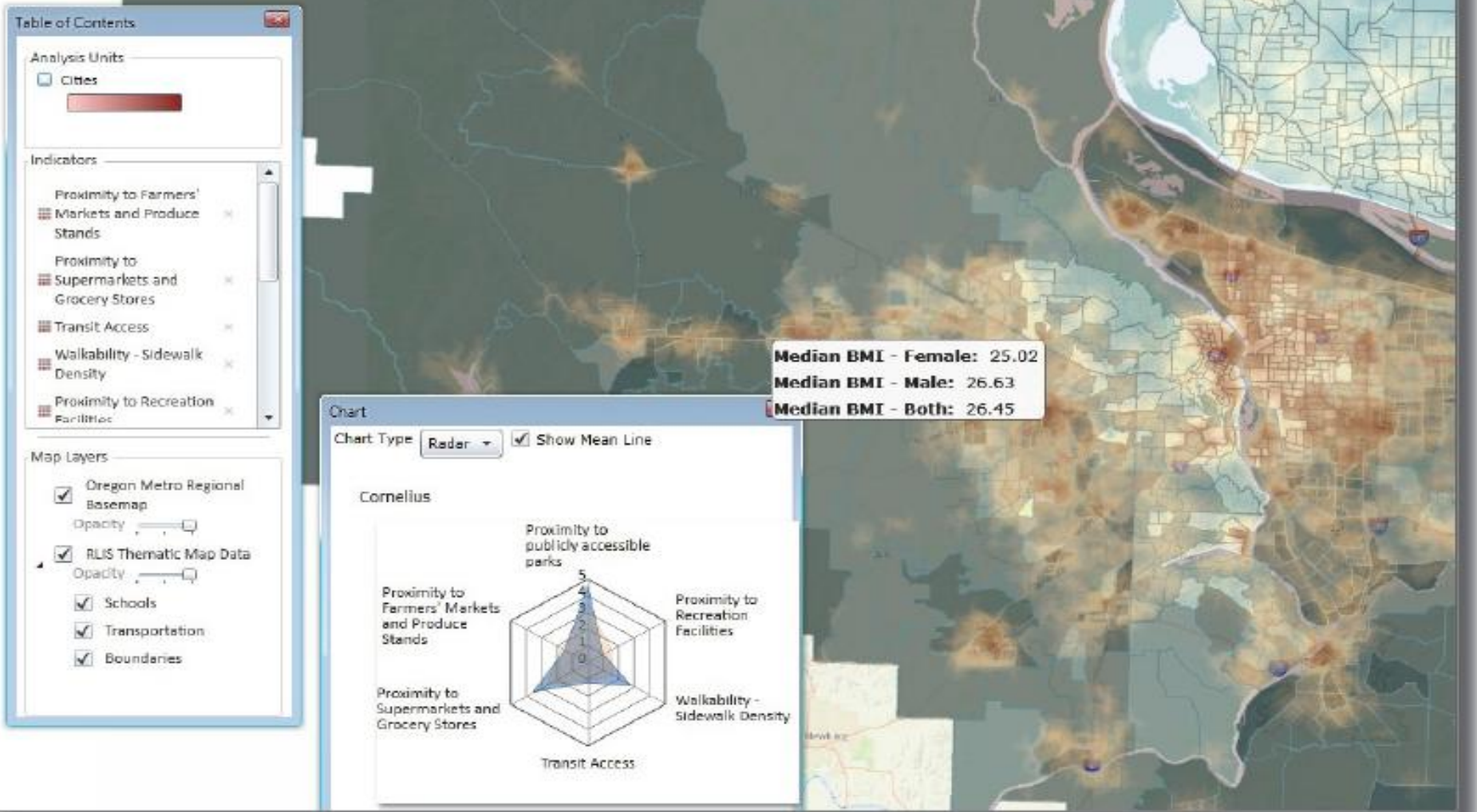
- 2 - 30%
- 31 - 45%
- 46 - 70%
- 71 - 95%

3rd Grade Reading Levels with School Poverty and Race



Mapping Tool Demo

www.equityatlas.org



Other Things You Can Do with the Mapping Tool

- Locate a specific address on the map
- Create your own composite heatmap indicators
- Scroll over the maps to find cities, neighborhoods, and underlying data
- Export the underlying data to do your own statistical analysis
- Export the data into a GIS program to add your own map layers



Workshops and Trainings

www.equityatlas.org



COALITION FOR A
LIVABLE FUTURE

SIGN UP FOR CLF EMAIL [Subscribe >](#)

SUPPORT A LIVABLE FUTURE [Donate >](#)

[HOME](#)

[ABOUT](#) ▾

[PROGRAMS](#) ▾

[RESOURCES](#) ▾

[NEWS & EVENTS](#) ▾

[GET INVOLVED](#) ▾

[CONTACT](#)

Regional Equity Atlas

The Portland Metro Region's Geography of Opportunity

Create Your Own Maps

Explore equity conditions across the region, analyze the issues that interest you, and create your own maps.

[Equity Atlas Mapping Tool](#)

powered by the Metro Context Tool Engine

User Guide & Tutorials

[Step-by-step instructions for using the online mapping tool.](#)

Take Action

The Coalition for a Livable Future's goal for the Equity Atlas project is to provide data and analysis that will support changes in policy, planning, and investment decisions to create a more equitable region.

We invite you to work with us to make the Portland-Vancouver region a place where everyone benefits from the opportunities the region provides so that we are all able to thrive.

Over the upcoming months, CLF will offer a range of opportunities for taking action:

- **Workshops:** CLF is hosting workshops with community groups, government agencies, non-profits, advocacy organizations, and other interested stakeholders to introduce them to the Atlas mapping tool and engage them in using it to explore equity issues from the perspective of their own communities and constituencies. You can [sign up here for an upcoming workshop](#), or contact us to [request a workshop or presentation](#) for your organization or coalition.
- **Technical Trainings:** Our partners at Portland State University are providing in-depth, hands-on technical trainings for individuals and organizations interested in learning how to use the Equity Atlas 2.0 online mapping tool to create their own maps and analysis. You can [register here for an upcoming free training session](#). Or, if you would like to arrange for an on-site group training at your organization or agency, [contact us to learn](#) more about our sliding scale fees.

A Call to Action

The Atlas exposes significant disparities affecting people of color, low income populations, and youth across a wide range of issue areas, leading to stark differences in health outcomes. These inequities are the result of past and current decisions, and they can be changed.

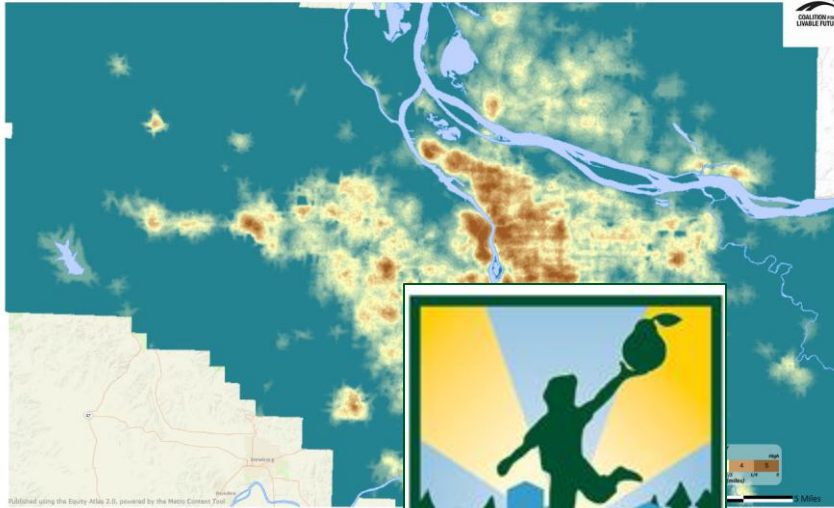
Working toward equity requires the prioritization of policies, infrastructure, and investments to ensure that all people and communities can thrive.

Building an equitable region will benefit us all by creating a stronger, healthier, and more sustainable community.

Using Atlas 2.0 to Create Change

Oregon Public Health Institute Metro Regional Government

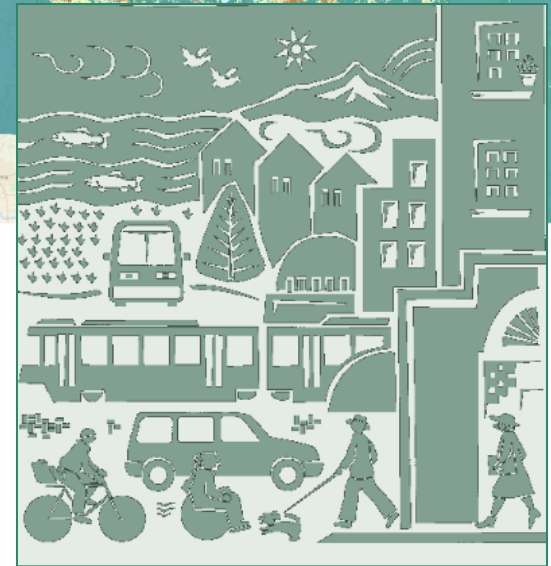
Healthy Eating Active Living Composite Heatmap



Populations of Color (Density per Acre)



HEALTHY EATING
ACTIVE LIVING
**CITIES
CAMPAIGN**



Using Atlas 2.0 to Create Change

The Bus Project

Oregon's Health CO-OP

Voter Participation Rates - General Election



Body Mass Index in Relationship to Healthy Eating Active Living Composite



- Workshops
- Trainings
- Story telling
- White papers
- Policy change
- Institutionalizing equity



Thank You to
Regional Equity Atlas 2.0 Funders

Northwest Health Foundation
Kaiser Permanente Community Fund
Robert Wood Johnson Foundation
Meyer Memorial Trust
Bullitt Foundation

